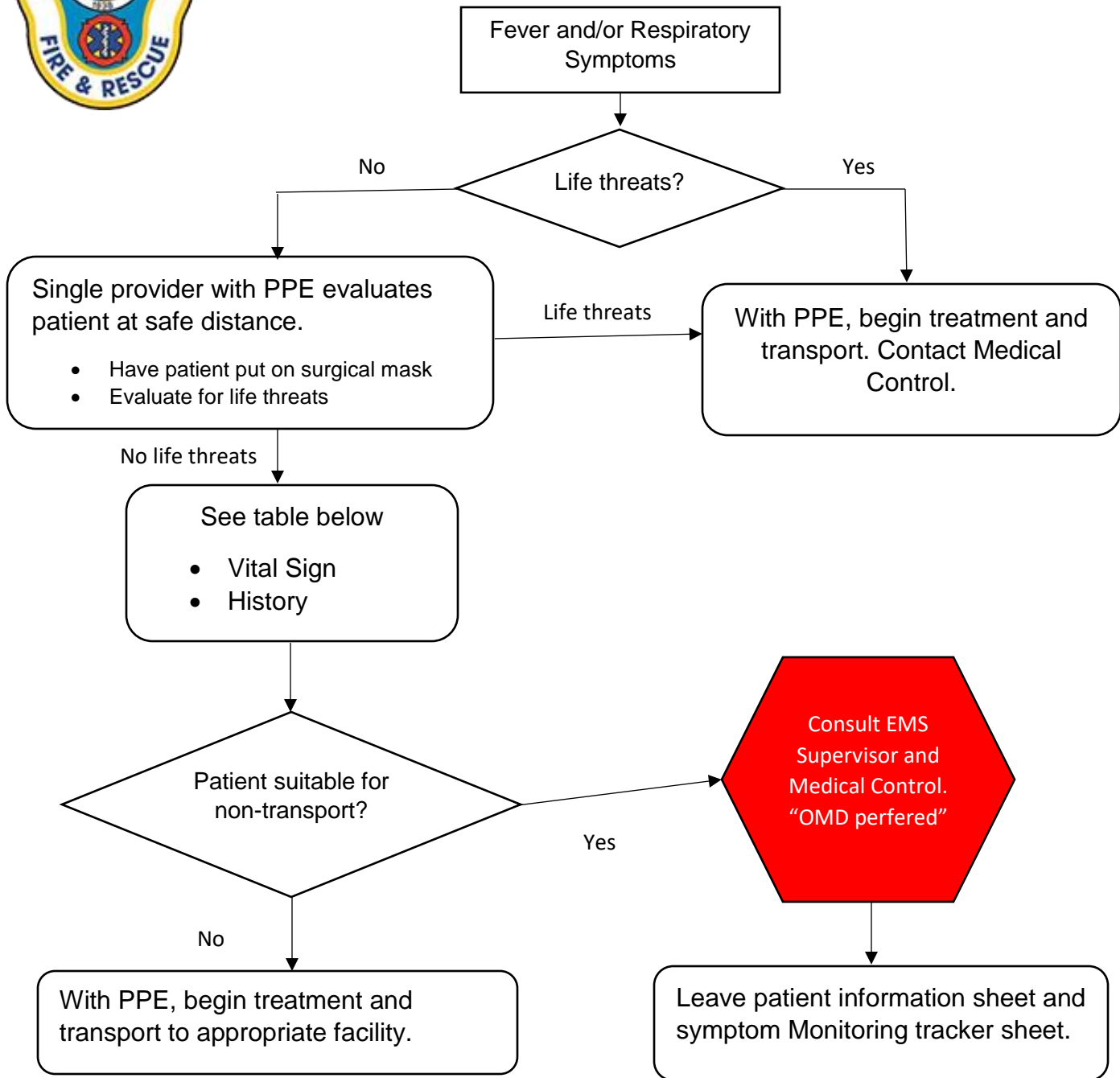




COVID-19 Transport Decision Protocol



Non-Transport Parameters:	Possible Transport:
<p style="text-align: center;">Vital Signs</p> <p>Temperature < 104°F Heart Rate <110 Respirations < 22 BP >100/P</p>	<p>If ANY vital sign or criterion outside of "Non-Transport parameters, may require transport. Consult OMD!</p>
<p style="text-align: center;">Medical History</p> <p>Age < 60 No Lung or Heart Disease No diabetes Not Immunocompromised</p>	<p style="text-align: center;">ALS Treatment Criteria:</p> <p style="text-align: center;">Vital signs</p> <p>Temperature > 104°F Heart Rate >120 Respirations < 8 or > 30 BP <90/P</p>