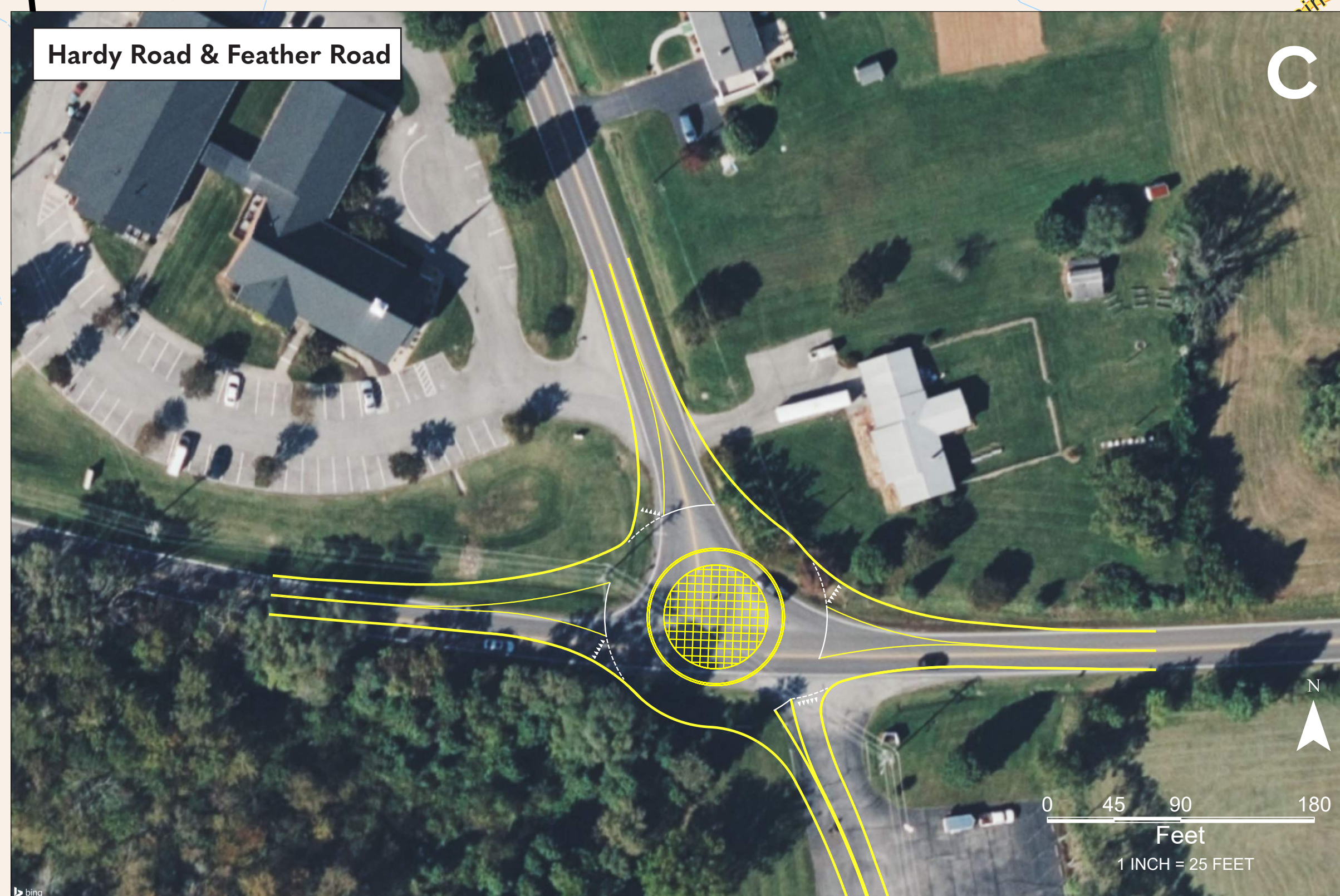
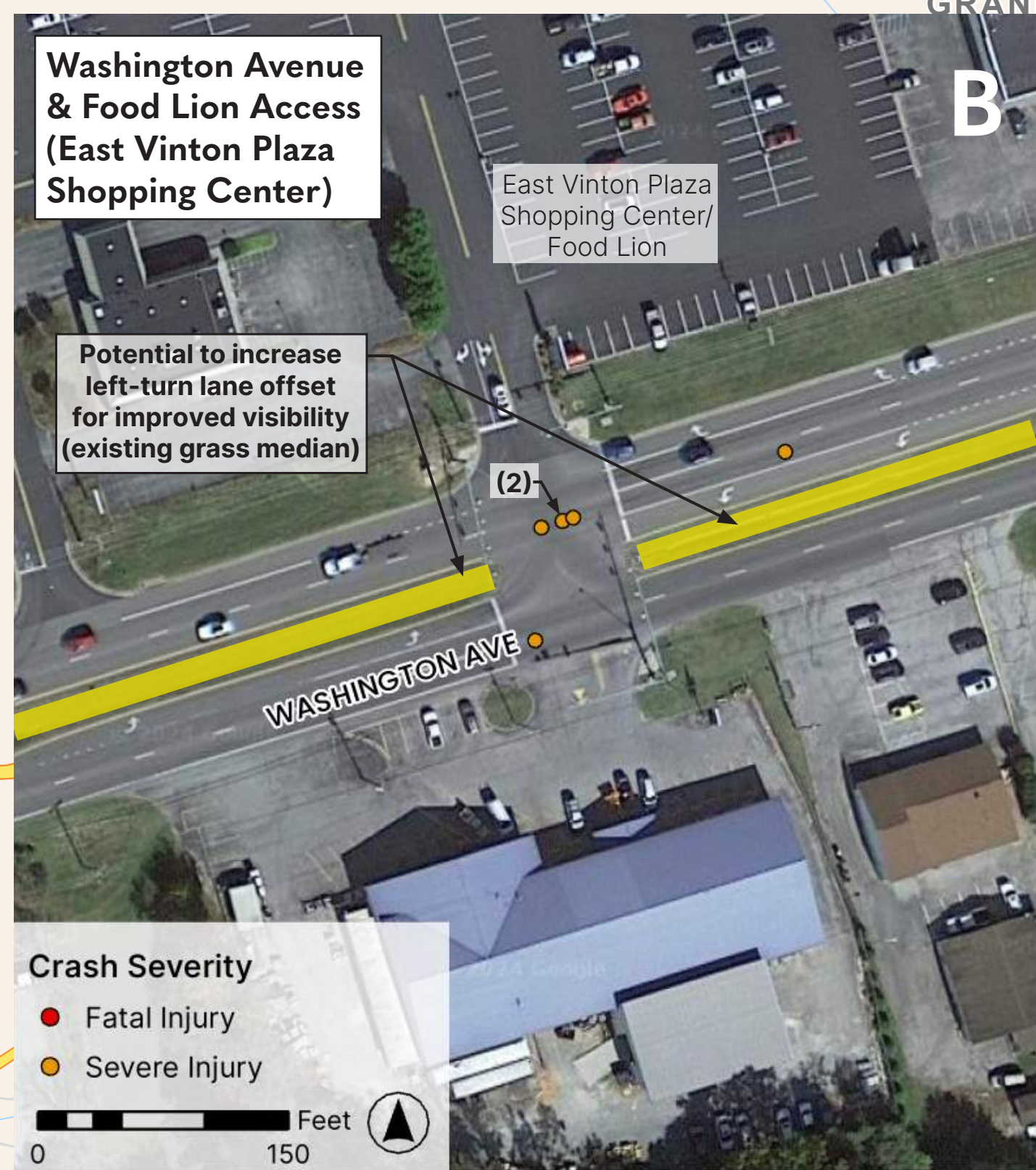
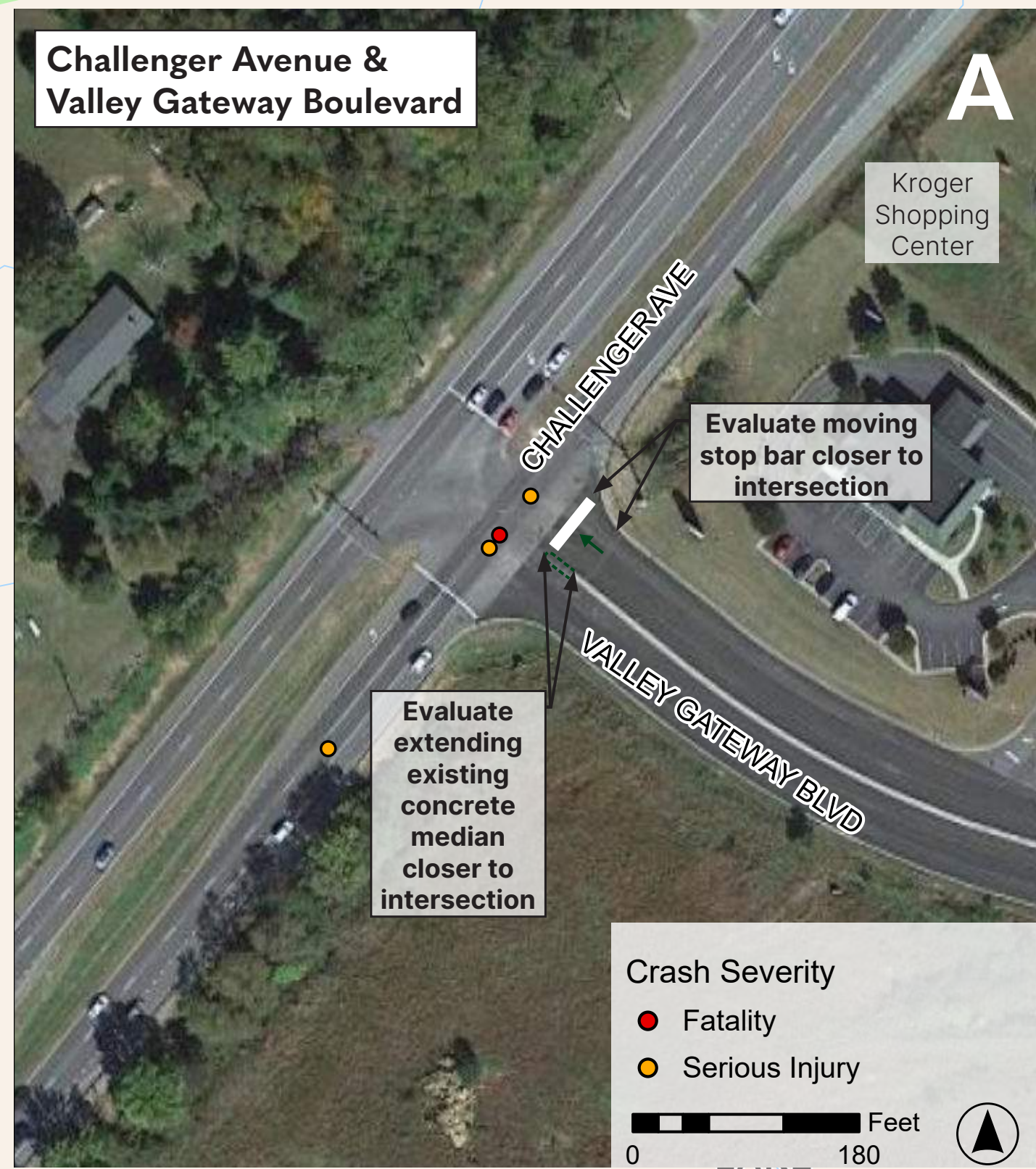


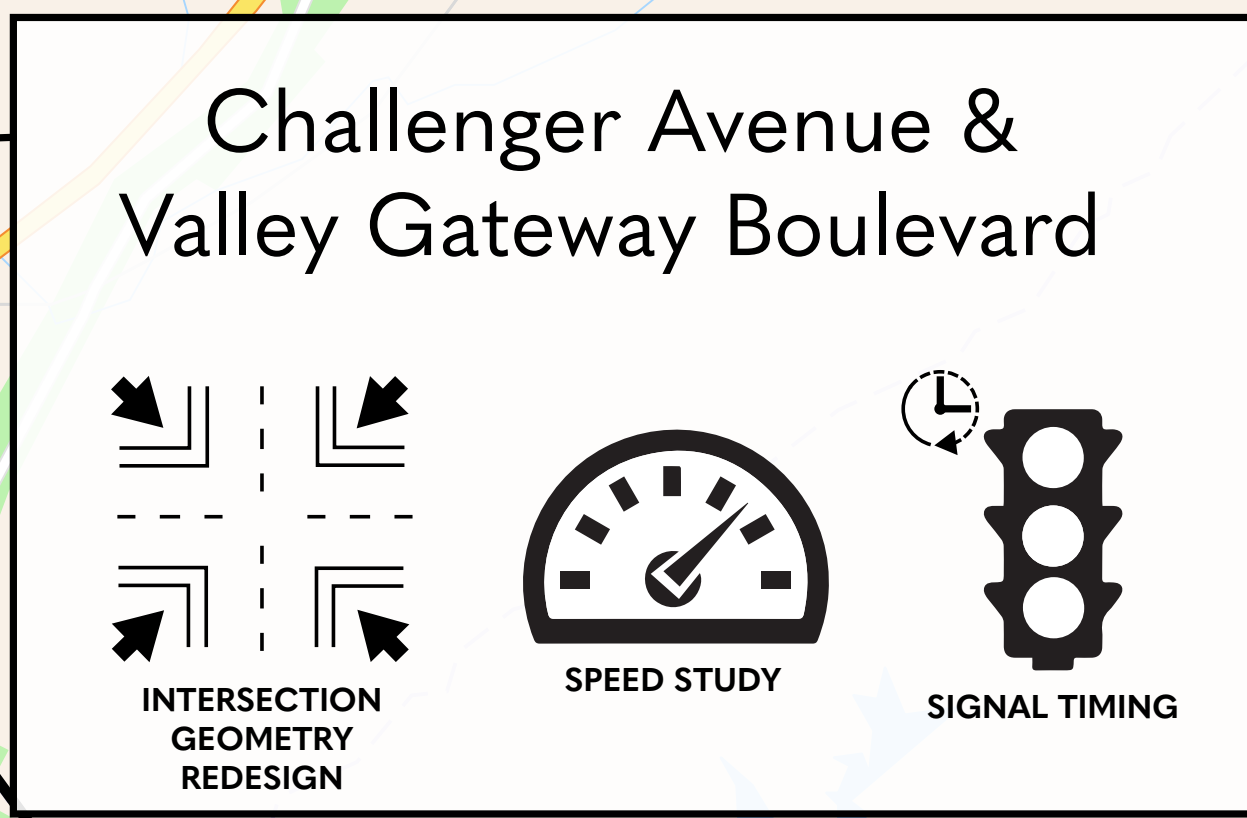
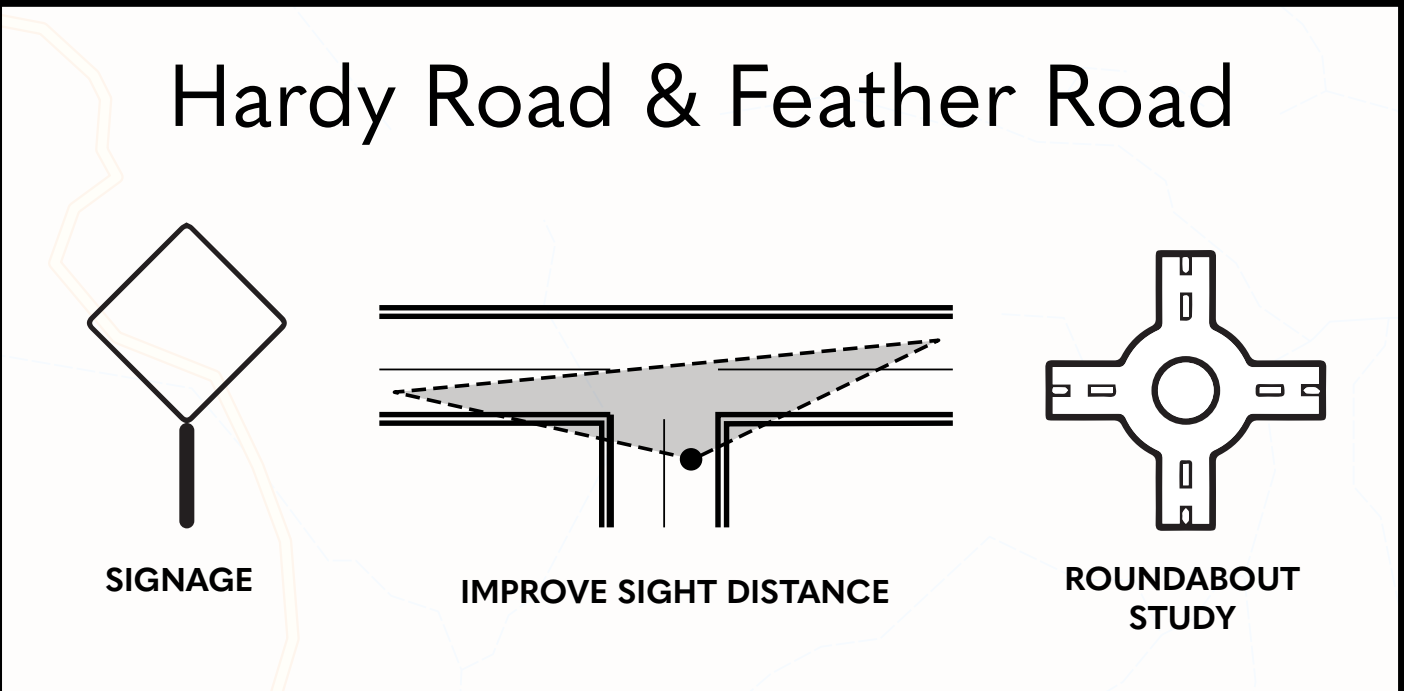
TOP 10 INTERSECTIONS OF SERIOUS INJURY & FATAL CRASHES POTENTIAL IMPROVEMENT OPTIONS

ROANOKE COUNTY, VIRGINIA | SEPTEMBER 2024





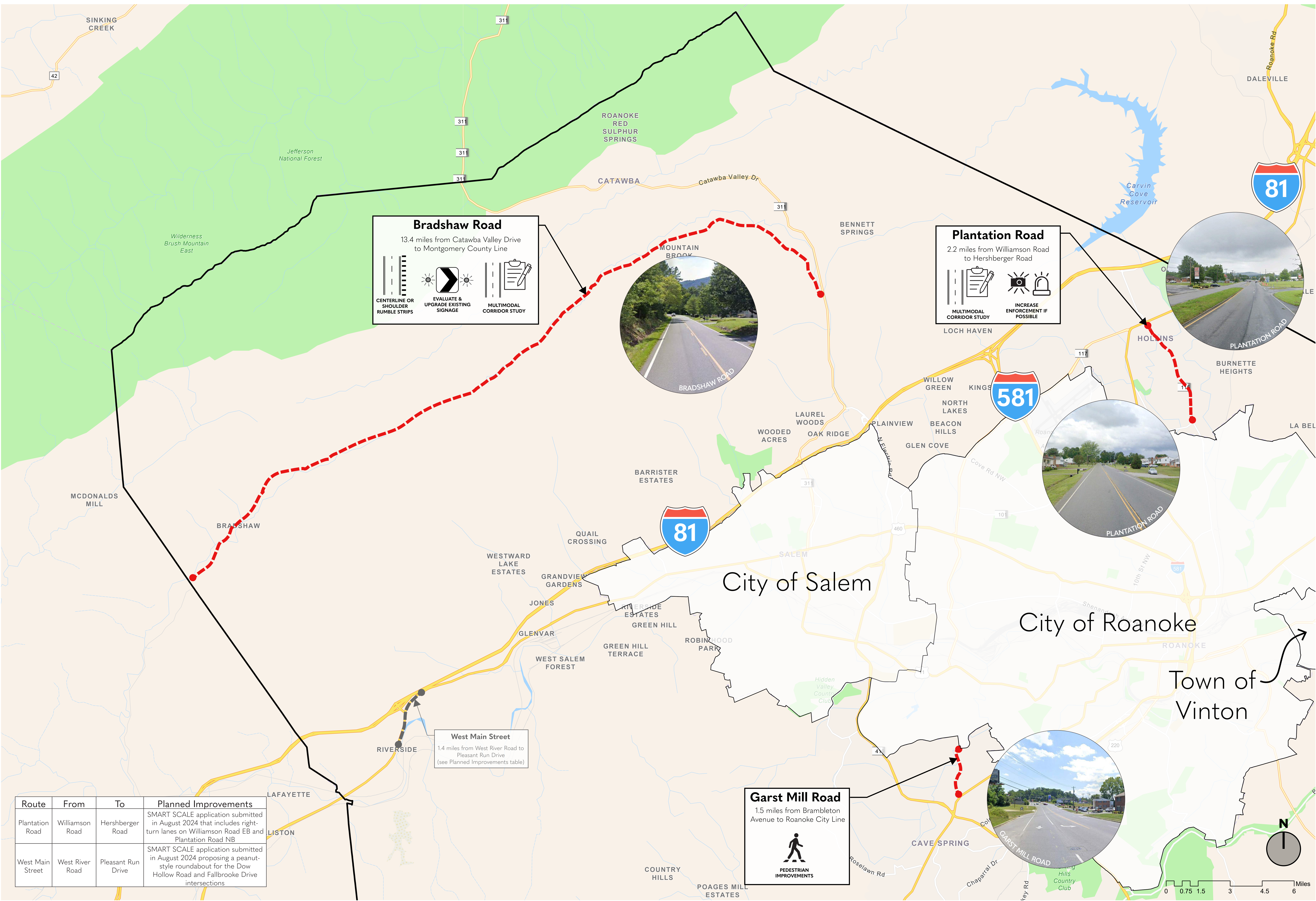
Primary Route	Secondary Route	Planned Improvements
Peters Creek Road	Barrens Road	SMART SCALE application submitted in August 2024 that includes intersection improvements and pedestrian accommodations
Williamson Road	Plantation Road	SMART SCALE application submitted in August 2024 that includes right-turn lanes on Williamson Road EB and Plantation Road NB
West Main Street	Dow Hollow Road	SMART SCALE application submitted in August 2024 proposing a peanut-style roundabout for the Dow Hollow Road and Fallbrooke Drive intersections



TOP 10 INTERSECTIONS OF SERIOUS INJURY & FATAL CRASHES POTENTIAL IMPROVEMENT OPTIONS

ROANOKE COUNTY, VIRGINIA | SEPTEMBER 2024





Bradshaw Road
13.4 miles from Catawba Valley Drive to Montgomery County Line

CENTERLINE OR SHOULDER RUMBLE STRIPS

EVALUATE & UPGRADE EXISTING SIGNAGE

MULTIMODAL CORRIDOR STUDY

Plantation Road
2.2 miles from Williamson Road to Hershberger Road

MULTIMODAL CORRIDOR STUDY

INCREASE ENFORCEMENT IF POSSIBLE

West Main Street
1.4 miles from West River Road to Pleasant Run Drive (see Planned Improvements table)

Garst Mill Road
1.5 miles from Brambleton Avenue to Roanoke City Line

PEDESTRIAN IMPROVEMENTS

Route	From	To	Planned Improvements
Plantation Road	Williamson Road	Hershberger Road	SMART SCALE application submitted in August 2024 that includes right-turn lanes on Williamson Road EB and Plantation Road NB
West Main Street	West River Road	Pleasant Run Drive	SMART SCALE application submitted in August 2024 proposing a peanut-style roundabout for the Dow Hollow Road and Fallbrooke Drive intersections

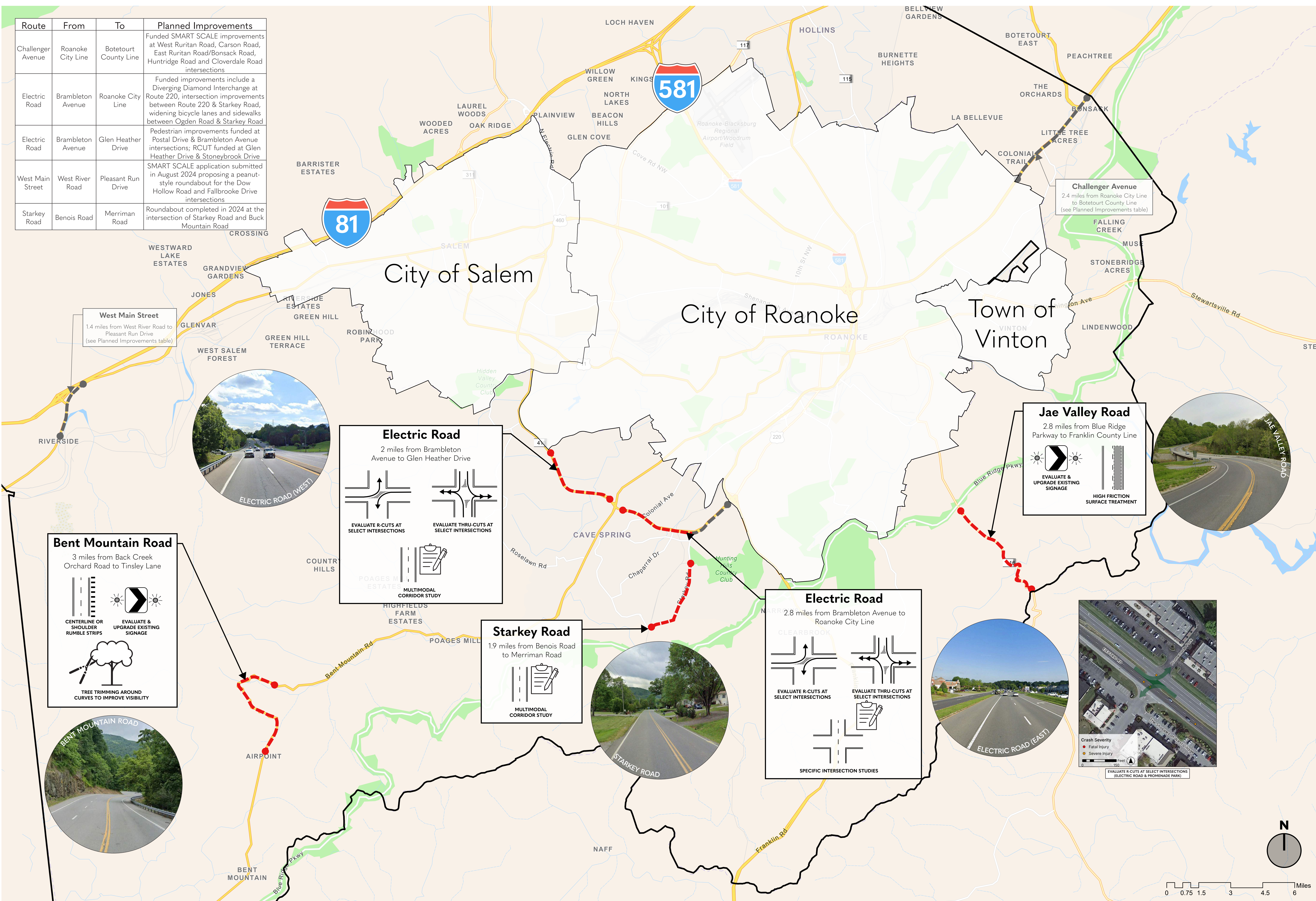
TOP 10 CORRIDORS OF SERIOUS INJURY & FATAL CRASHES
POTENTIAL IMPROVEMENT OPTIONS



ROANOKE COUNTY, VIRGINIA | SEPTEMBER 2024



Route	From	To	Planned Improvements
Challenger Avenue	Roanoke City Line	Botetourt County Line	Funded SMART SCALE improvements at West Ruritan Road, Carson Road, East Ruritan Road/Bonsack Road, Huntridge Road and Cloverdale Road intersections
Electric Road	Brambleton Avenue	Roanoke City Line	Funded improvements include a Diverging Diamond Interchange at Route 220, intersection improvements between Route 220 & Starkey Road, widening bicycle lanes and sidewalks between Ogden Road & Starkey Road
Electric Road	Brambleton Avenue	Glen Heather Drive	Pedestrian improvements funded at Postal Drive & Brambleton Avenue intersections; RCUT funded at Glen Heather Drive & Stoneybrook Drive
West Main Street	West River Road	Pleasant Run Drive	SMART SCALE application submitted in August 2024 proposing a peanut-style roundabout for the Dow Hollow Road and Fallbrooke Drive intersections
Starkey Road	Benois Road	Merriman Road	Roundabout completed in 2024 at the intersection of Starkey Road and Buck Mountain Road



TOP 10 CORRIDORS OF SERIOUS INJURY & FATAL CRASHES POTENTIAL IMPROVEMENT OPTIONS