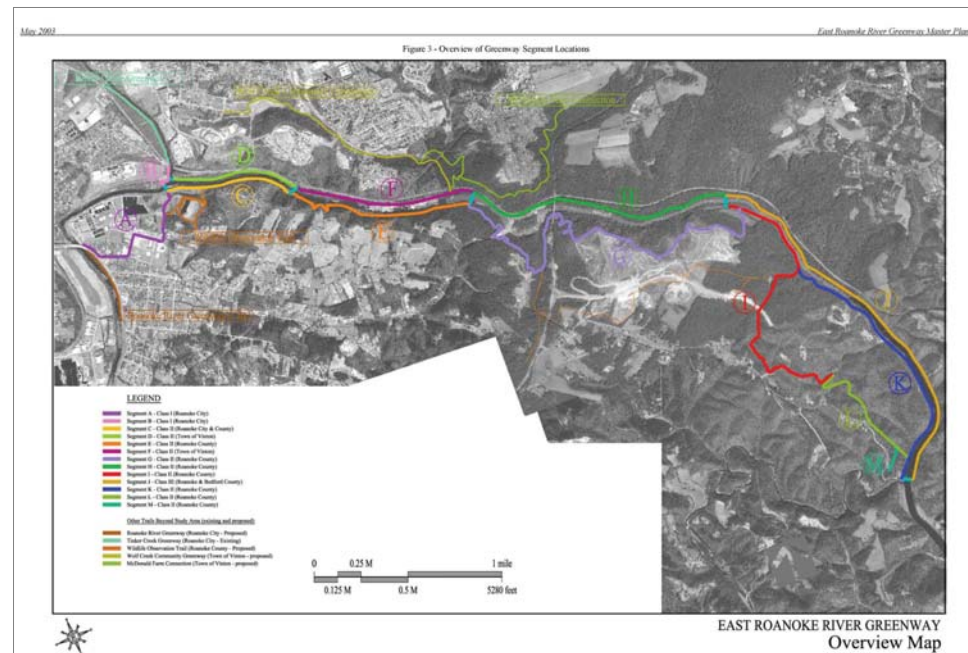
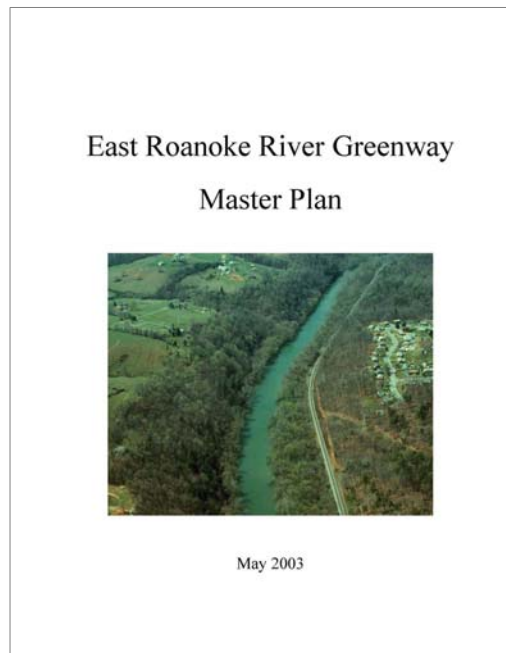


East Roanoke River Greenway Gap History

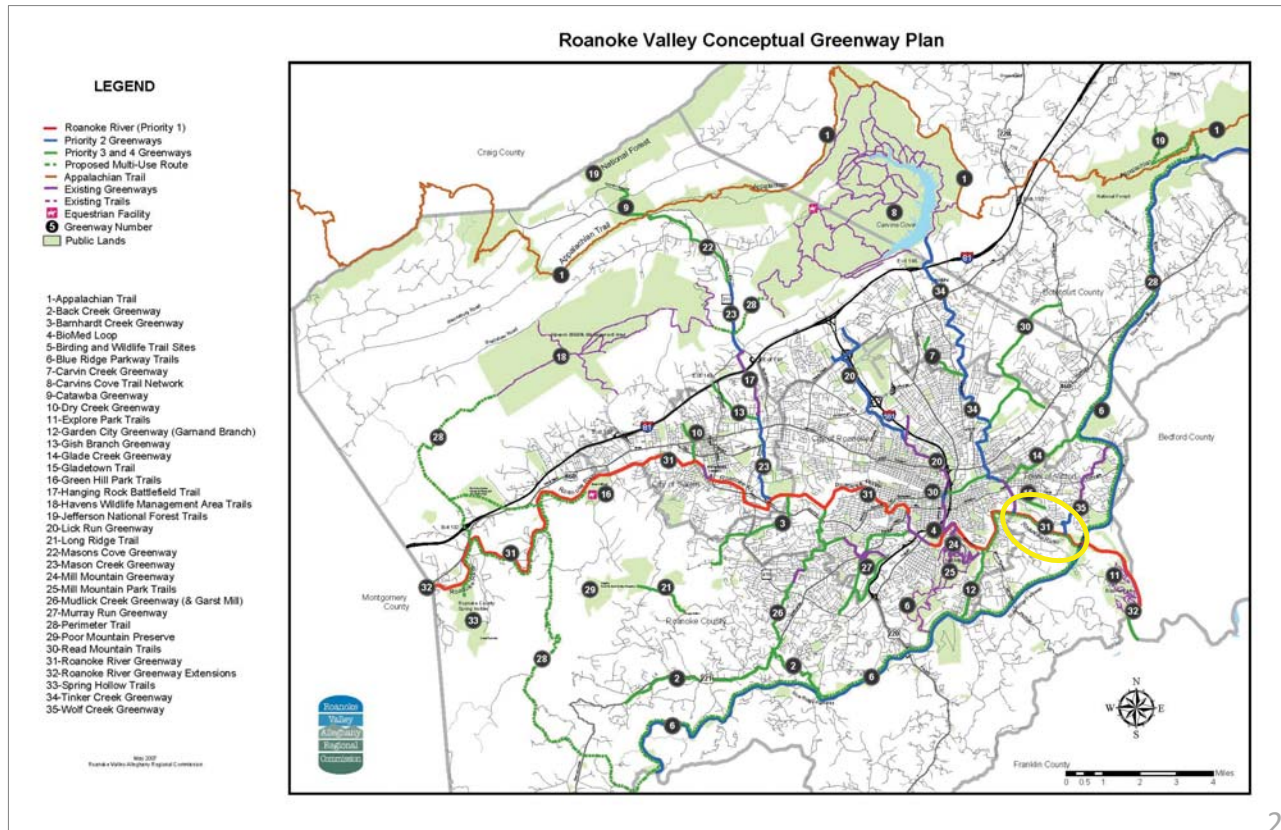
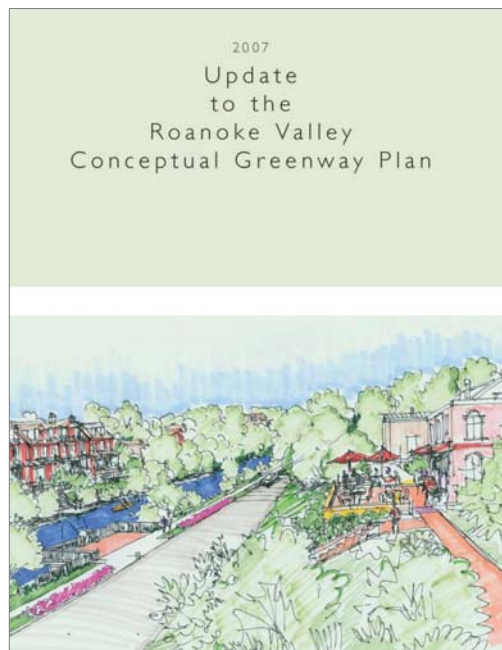
1995: The Roanoke Valley Conceptual Greenway Plan was completed which identifies the Roanoke River Greenway.

2003: The East Roanoke River Greenway Master Plan was completed which included potential greenway segments between Bennington Street and Rutrough Point on both sides of the river.



East Roanoke River Greenway Gap History

2007: The Roanoke Valley Conceptual Greenway Plan was adopted by the Roanoke Valley Greenway Commission and member localities, including Roanoke County. The Roanoke River Greenway is the top priority.



East Roanoke River Greenway Gap History

2008-2014: Roanoke County applied for and received several grants to fund the Roanoke River Greenway between the City of Roanoke and the Blue Ridge Parkway.

2012-2018: Roanoke County hired Anderson and Associates of Virginia, Inc. (Now Hurt and Proffitt, Inc.) to design and engineer the greenway, and to perform environmental investigations. The County held meetings with the property owners along the Roanoke River as the greenway developed.

2013: Roanoke County partnered with the City of Roanoke, City of Salem and the Roanoke Valley Greenway Commission to request additional grant funding to complete several sections of the Roanoke River Greenway, including the section between the City of Roanoke and the Blue Ridge Parkway. Funding was awarded.

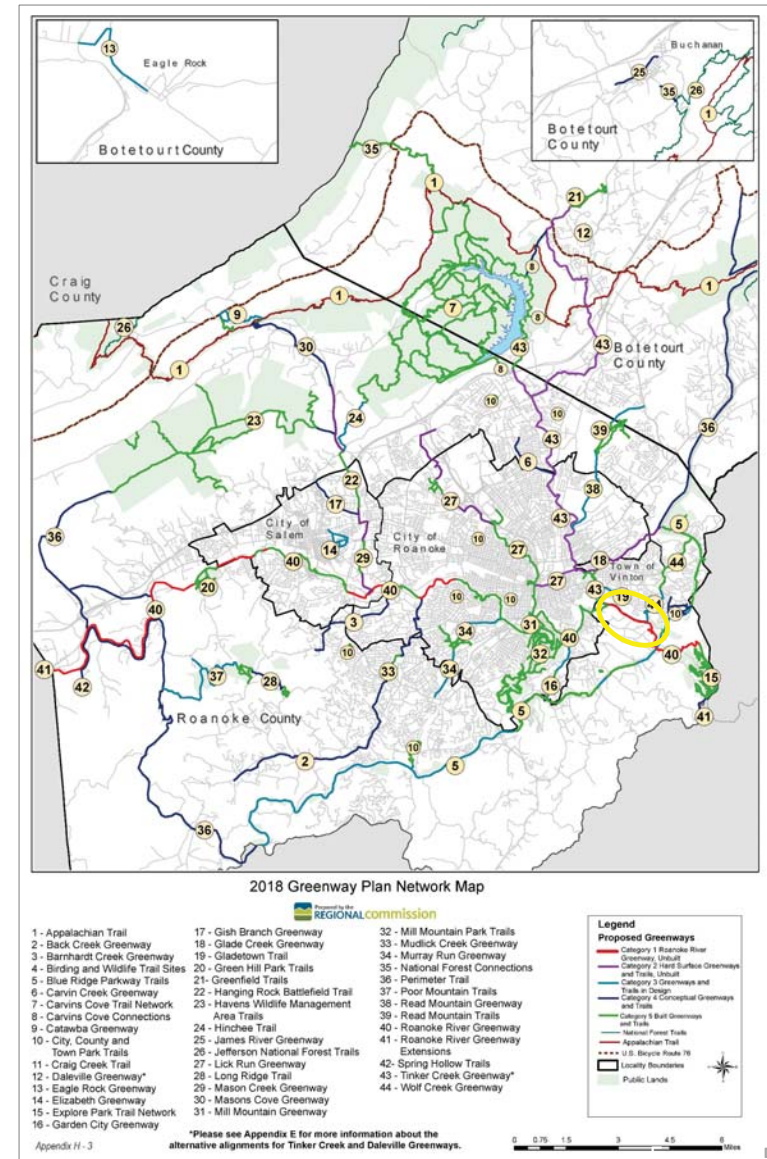
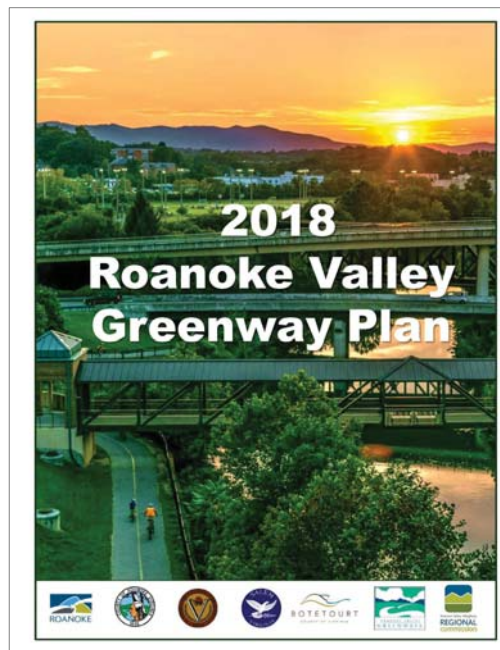
East Roanoke River Greenway Gap History

2018-2021: Greenway design and environmental coordination was completed. The County hired a right-of-way consultant (3B Consulting Services LLC) to negotiate easements with property owners. Easements from five property owners on ten parcels were obtained along the corridor.



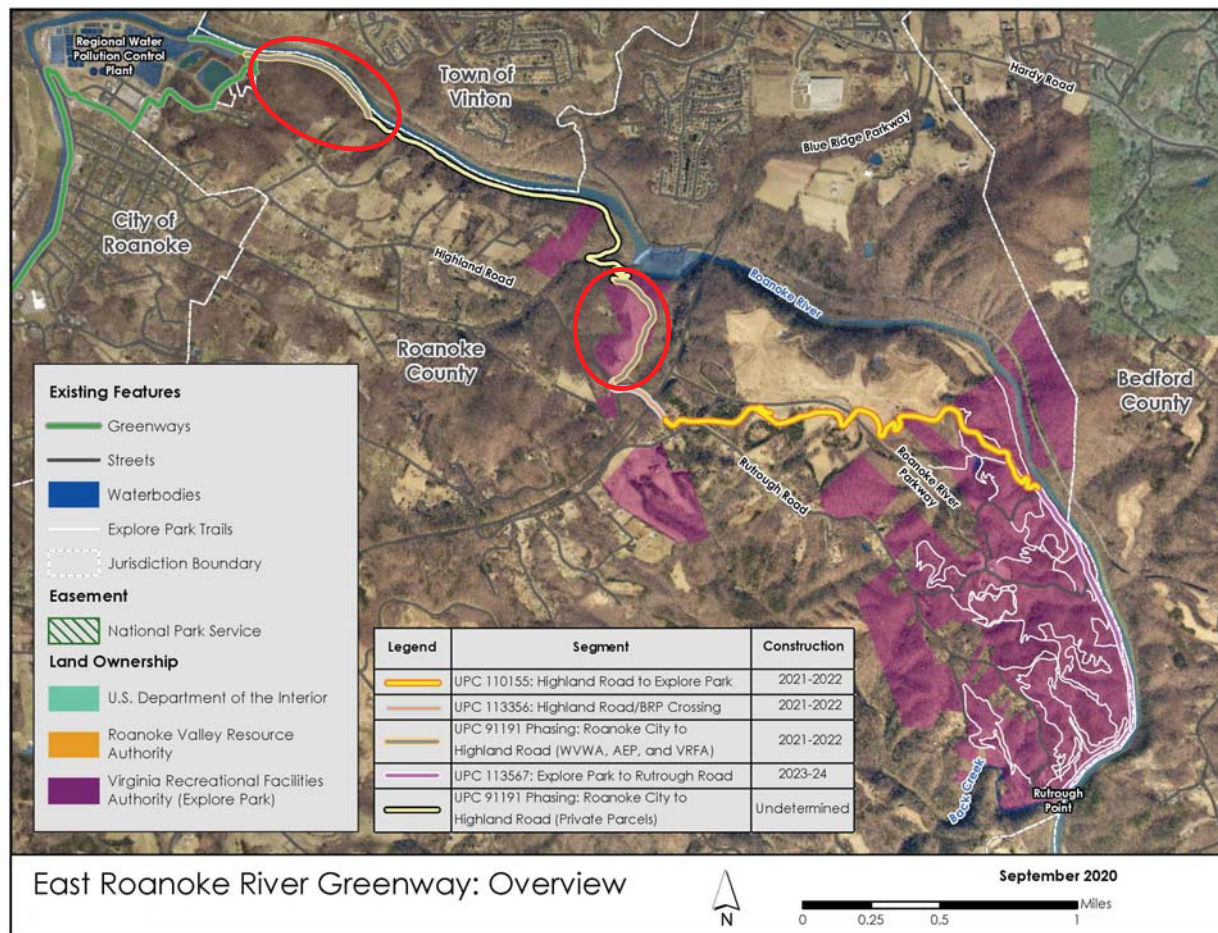
East Roanoke River Greenway Gap History

2018: The Roanoke Valley Greenway Plan was adopted by the Roanoke Valley Greenway Commission and member localities, including Roanoke County. The Roanoke River Greenway is identified in Category 1.



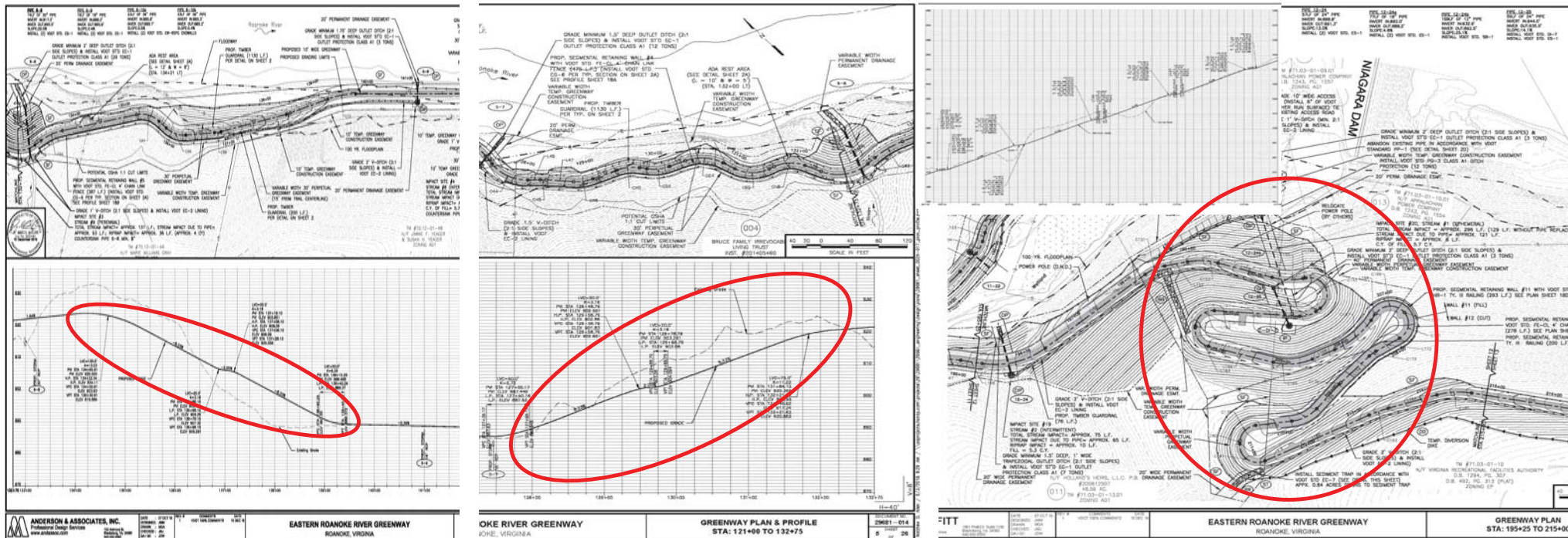
East Roanoke River Greenway Gap History

2020: Roanoke County phased the project to focus on both ends where contiguous right-of-way had been obtained.



East Roanoke River Greenway Gap History

2021: Regulations changed to require the greenway to have no steeper than five percent grade, or slope, to provide a better experience for users with disabilities. Because sections of the greenway had been designed to 8.33 percent grade, the greenway had to be redesigned.



This exhibit shows about one half mile of greenway designed at 8.33 percent grade, which would be challenging for any user. 7

East Roanoke River Greenway Gap Challenges

Roanoke County designed the original greenway concept between 2012 and 2018 to minimize impacts to property owners. As a result, the greenway was designed close to the Roanoke River in the 100-year floodplain. Based upon recent Roanoke River flows and historical storm data, half of the original greenway concept would likely flood once to several times a year for one to two days. More severe storms would flood the greenway for additional days. Greenway cleanup efforts would likely take one week or more for each storm.

In comparison, the Wiley Drive low water bridge located between Wasena and River's Edge Park, which is about 3 feet above the typical river water level, is closed due to flooding and the related debris removal a total of 15 to 25 days every year. Because of this, the City pursued and obtained funding to replace the bridge.

Two of the greenway concepts proposed in July 2025 are located above the 100-year floodplain and are unlikely to flood.

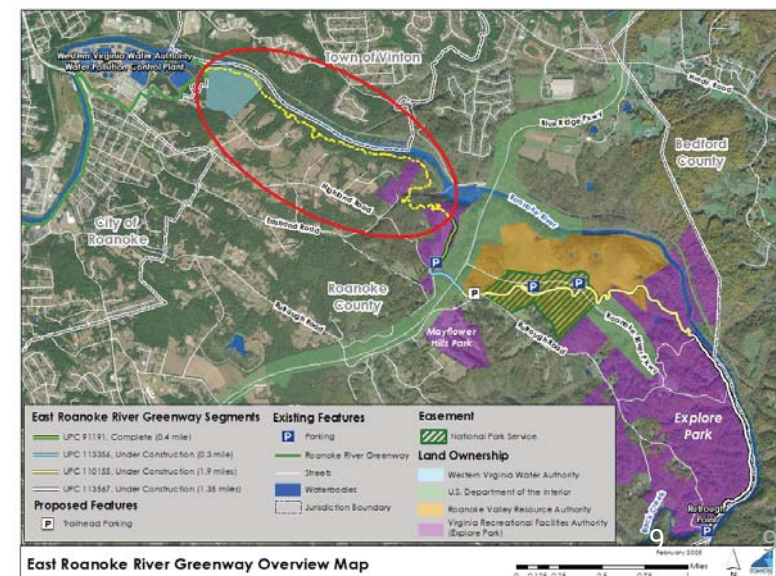
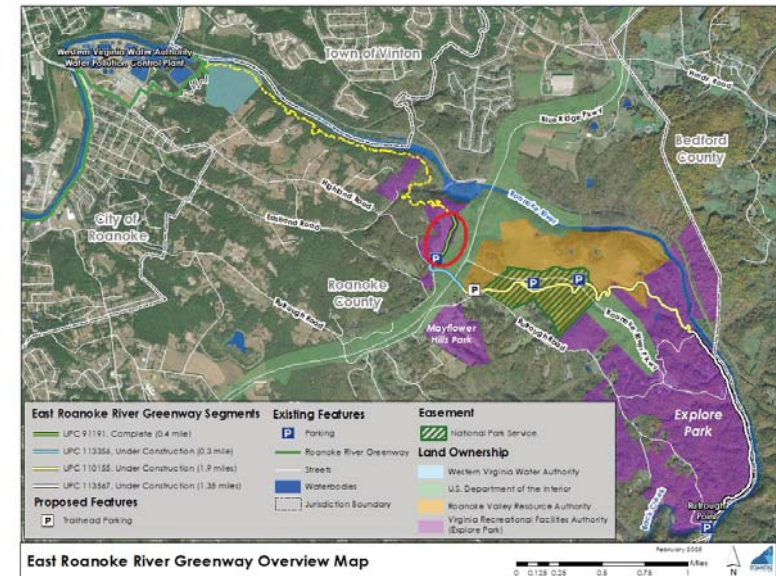


Floodway, 100-Year Floodplain and 500-Year Floodplain along the Roanoke River between Tinker Creek and the Blue Ridge Parkway

East Roanoke River Greenway Gap History

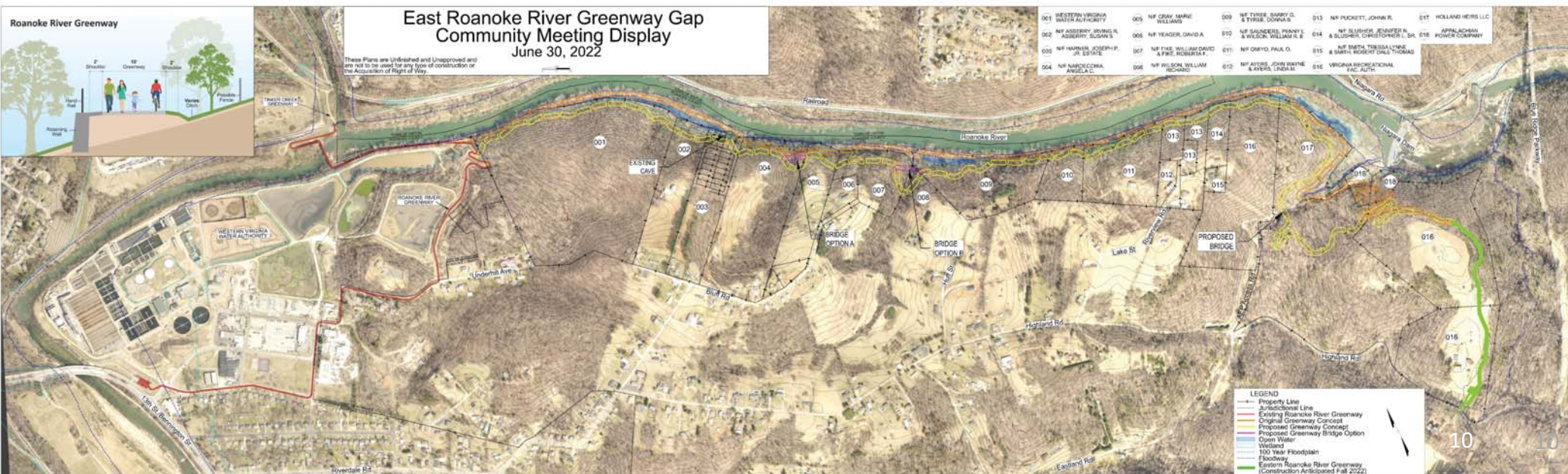
2022: Roanoke County and VDOT determined that the eastern section (VDOT UPC 91191) of the greenway on the Virginia Recreational Facilities Authority property could move forward to construction as designed. This greenway segment was completed in 2023.

2022: Roanoke County and VDOT collaborated on the remainder of this greenway segment between the Water Pollution Control Plant and the Virginia Recreational Facilities Authority greenway segment with a new alignment located farther up the slope to meet the new slope/grade requirements and to reduce the chance of flooding.



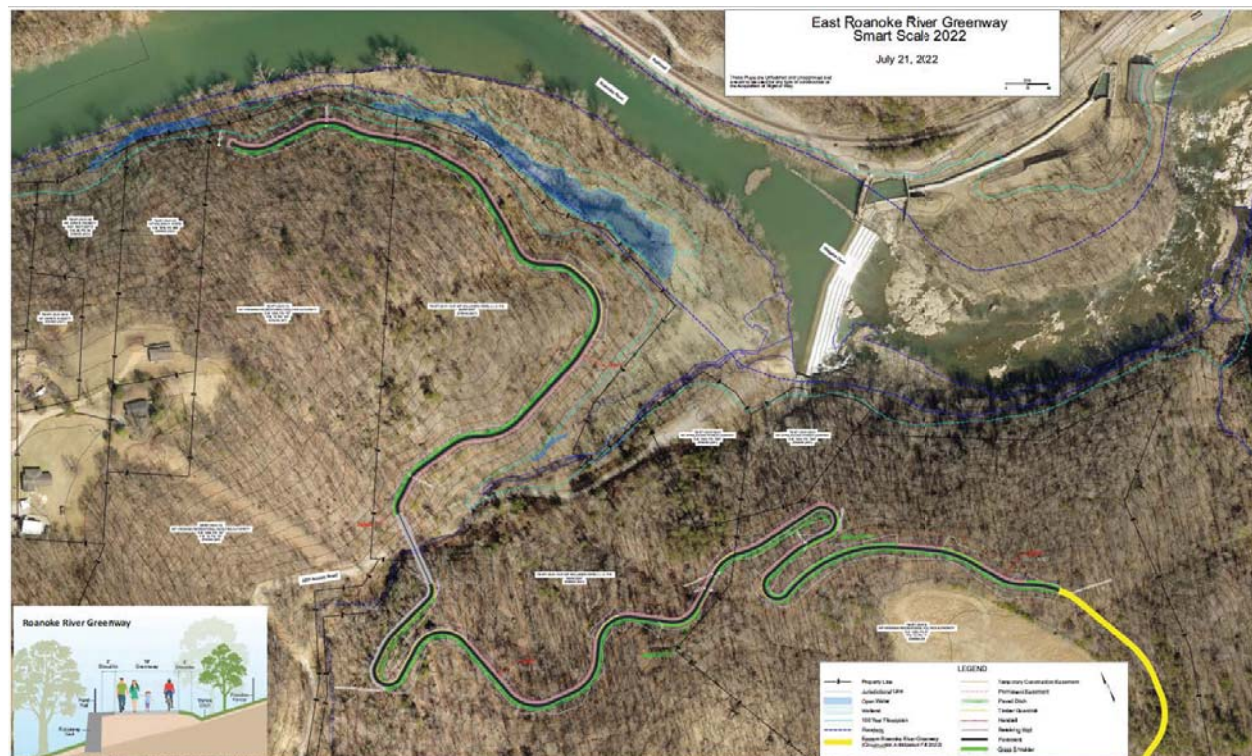
East Roanoke River Greenway Gap History

June 30, 2022: A total of 67 people attended a community meeting to review the potential VDOT greenway alignment (shown in yellow below) between the Water Pollution Control Plant and the Virginia Recreational Facilities Authority property where the new greenway segment was planned. The orange route along the river is Roanoke County's 2018 alignment. A total of 381 surveys were completed to provide feedback on the yellow VDOT alignment.



East Roanoke River Greenway Gap History

August 2022: Roanoke County and VDOT identified a reduced project scope crossing Virginia Recreational Facilities Authority property and one unoccupied private parcel that was submitted as a SMART SCALE grant application. With an estimate of \$29 million for a 0.9-mile-long greenway segment, the project did not score well enough to be recommended for funding.

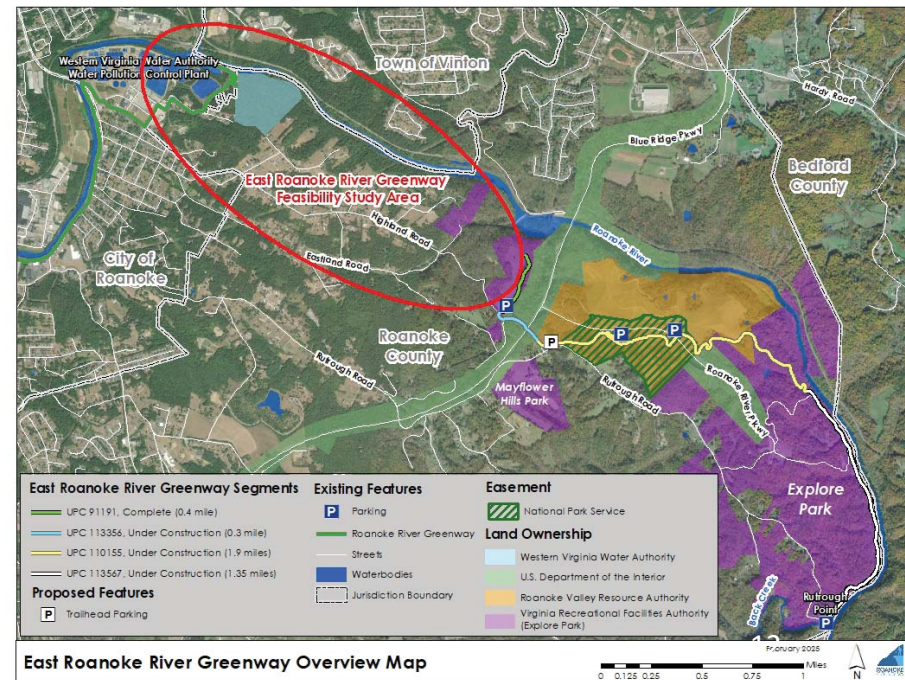


East Roanoke River Greenway Gap History

October 2022: County staff submitted a Capital Improvement Program request for County funding for an East Roanoke River Greenway Feasibility Study to consider alternate greenway alignments proposed by the community in June and July 2022.

May 2023: Funding for the Feasibility Study was included in the Adopted Fiscal Year 2024 through Fiscal Year 2033 Capital Improvement Program.

October 2024: Roanoke County contracted with AECOM Technical Services, Inc. to initiate the East Roanoke River Greenway Feasibility Study.



East Roanoke River Greenway Feasibility Study

Study Goal: Using community feedback from June and July 2022, engage the community to determine a preferred greenway alignment that can be engineered with future grant funding.

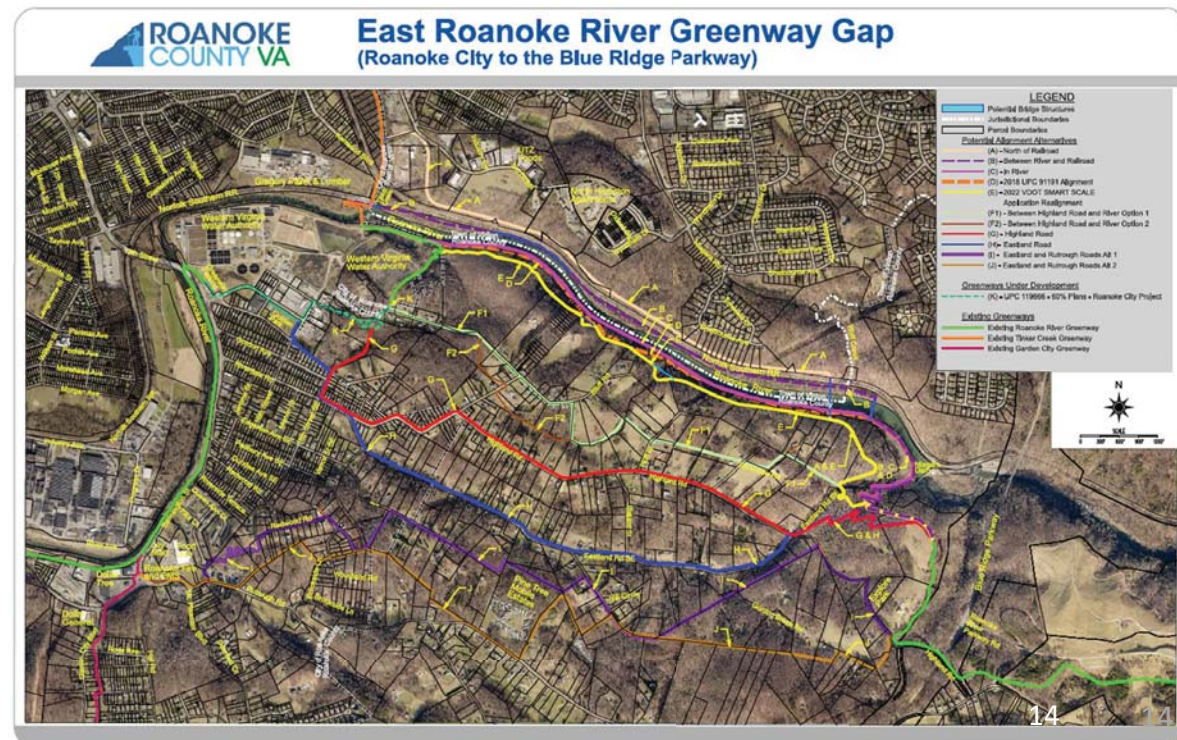
July 2022 survey respondents proposed several alternatives to the orange and yellow routes, including:

1. Remove the Niagara Dam and construct the greenway closer to the river – *AEP/ Appalachian Power's response: "Appalachian Power's Niagara Dam has provided customers with cost-effective, clean energy for decades. As we are currently engaged in relicensing for Niagara Dam through the Federal Energy Regulatory Commission, we expect one of the staples of Roanoke County and the community it serves to continue providing safe and reliable power for many years."*
2. Construct the greenway on the north side of the river – *two routes were proposed in February and one remains in July*
3. Construct the greenway closer to the river – *an in-river route is proposed*
4. Construct the greenway at a higher elevation for improved accessibility – *several routes were proposed in February at higher elevations in than the yellow route and two routes remain in July*
5. Widen Rutrough Road and locate the greenway alongside it – *routes were proposed in February adjacent to portions of several roads including Rutrough, Eastland and Highland in February; based on survey feedback, all routes have been removed in July*
6. Provide access to the water/river – *river access may be possible depending upon the route chosen*
7. Provide access to the Blue Ridge Parkway – *access to a Roanoke River Parkway overlook is part of the new Roanoke River Greenway segments to the east of the Blue Ridge Parkway*
8. Construct the greenway with steep slopes – *this cannot be accomplished using state or federal grant funding*¹³

East Roanoke River Greenway Feasibility Study

January 2025: County and AECOM staff met with stakeholders to review and discuss potential conceptual greenway routes including the Town of Vinton, the City of Roanoke, AEP | Appalachian Power, the Western Virginia Water Authority and the Virginia Department of Transportation.

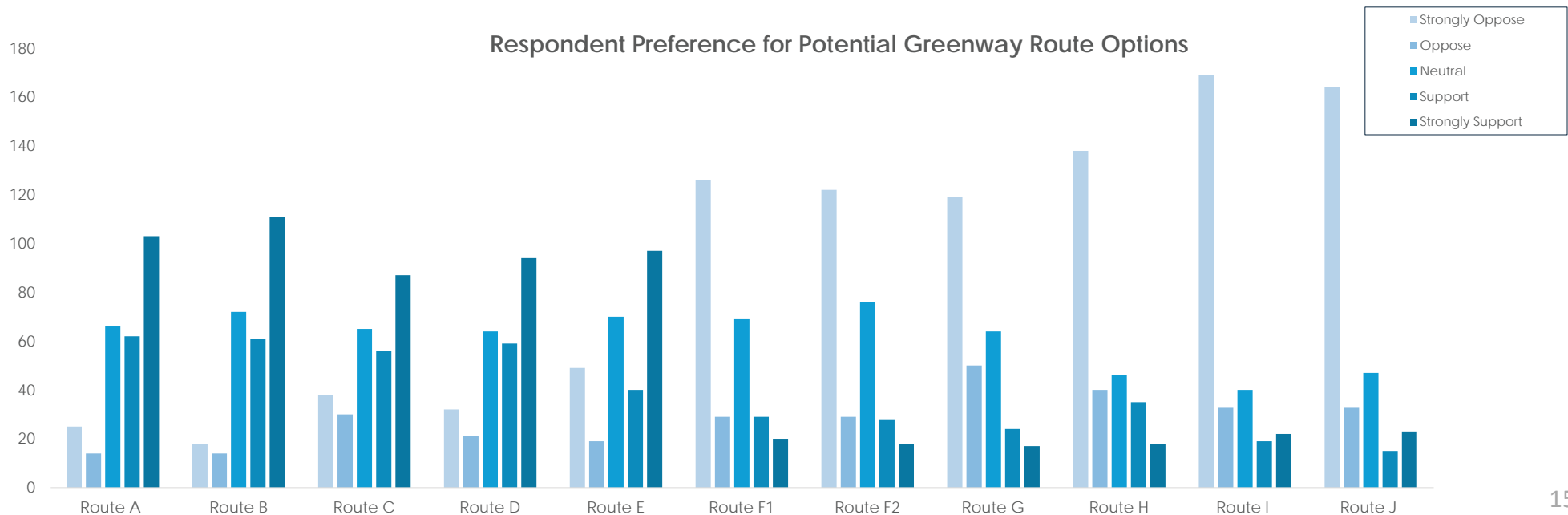
February 2025: Two open house-style community meetings were held with a total of 138 attendees. History exhibits and maps showing nine potential greenway alignments were available for review. Surveys were given to attendees and mailed to property owners, renters and tenants along the potential alignments to provide feedback.



East Roanoke River Greenway Feasibility Study

February 2025 Survey Results:

- 292 surveys were completed
- 162 surveys were completed within the study area (56 percent of all surveys completed)
- In general, there was support for routes along the Roanoke River and opposition to routes along roadways.



East Roanoke River Greenway Feasibility Study

April/May 2025: Based upon the February 2025 survey results, stakeholder feedback and additional investigation, the nine potential greenway routes were reduced to three preferred potential routes:

A: North of river and railroad tracks

C: In-river alignment using easements already obtained for the 2018 alignment

D/E: Original 2018 alignment and VDOT alignment combined to meet the five percent grade requirement

June/July 2025: County and AECOM staff updated stakeholders including the Town of Vinton, the City of Roanoke, AEP | Appalachian Power, the Western Virginia Water Authority, the Virginia Department of Transportation and Norfolk Southern to review and discuss preferred potential greenway routes.

July 2025: Community meetings are being held for the community to review and provide feedback on the three preferred potential greenway routes.

Next Steps

- **By August 1, 2025:** Please review the Preferred Potential Routes map, complete and return the survey:
 - Leave the completed survey with County staff;
 - Mail the completed survey to the address on the back; or
 - Complete the survey online at www.RoanokeCountyVA.gov/ERRGGap.
- **September 2025:** Roanoke County anticipates submitting a grant application to request funding for preliminary engineering activities for the preferred greenway alignment.
- **June 2026:** If grant funding is awarded, the Commonwealth Transportation Board will include it in the adopted FY 2027 Six Year Improvement Program.

East Roanoke River Greenway Construction

Segments Nearing Completion:

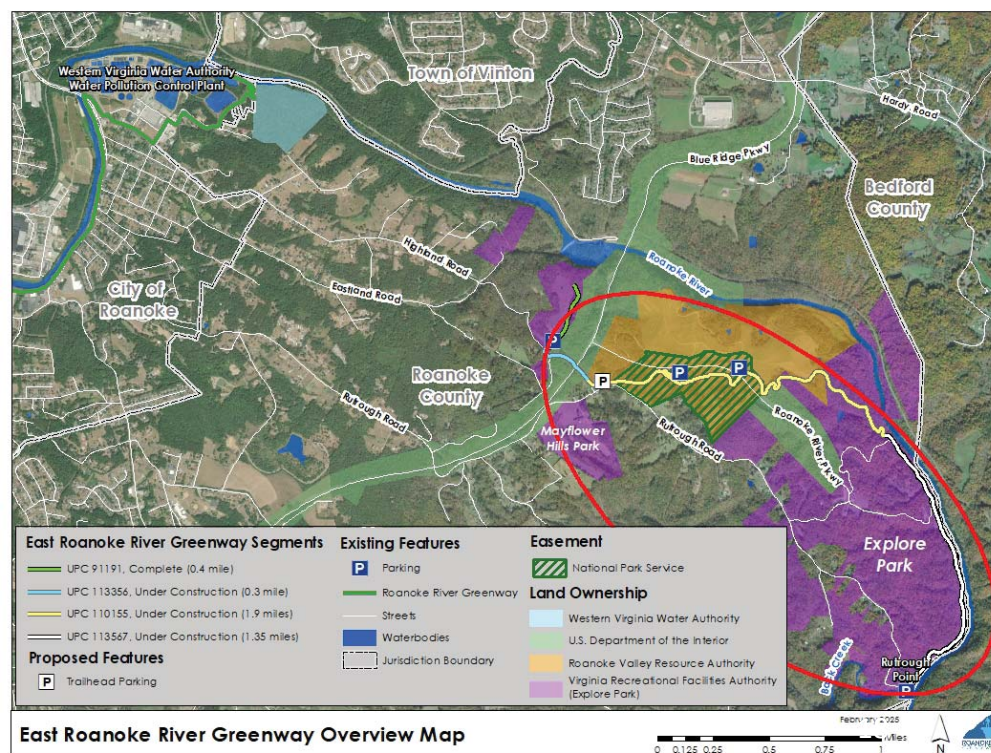
Light blue (UPC 113356) and yellow (UPC 110155) segments are located south of the Roanoke River, run parallel to Highland Road, cross underneath the Blue Ridge Parkway and the Roanoke River Parkway, and extend into Explore Park. Project closeout is underway for both segments.

Segment Under Construction:

White (UPC 113567) segment extends through Explore Park to Rutrough Point. Completion is anticipated in Spring 2026.

Combined length of the one existing and three new segments:

3.95 miles



Preferred Potential Greenway Routes Summary

Potential Route	Length (miles)	Proposed Bridges	Proposed Retaining Walls	Construction Estimate with 40% Contingency (excludes preliminary engineering and right-of-way costs)
Alignment A, North of Railroad	3.12	Three: across Tinker Creek, across the Norfolk Southern Railroad and the Roanoke River, across an AEP access road	Proposed along most of the route	\$89,600,000
Alignment C, In River	2.40	Four: three along the river and one across an AEP access road	Minimal along the river with substantial retaining walls at the eastern end	\$85,700,000
Alignment D/E, Combined 2018 and 2022 Routes	2.45	One: across an AEP access road <i>A possible alternate bridge (shortcut) is proposed to span between Alignment D/E on the WVWA property and Alignment A on AEP/North Hampton Apartments parcels.</i>	Proposed along most of the route	\$51,800,000

All proposed routes are designed to a maximum five percent grade, per VDOT standards.