

# West Roanoke River Greenway Feasibility Study Goal:

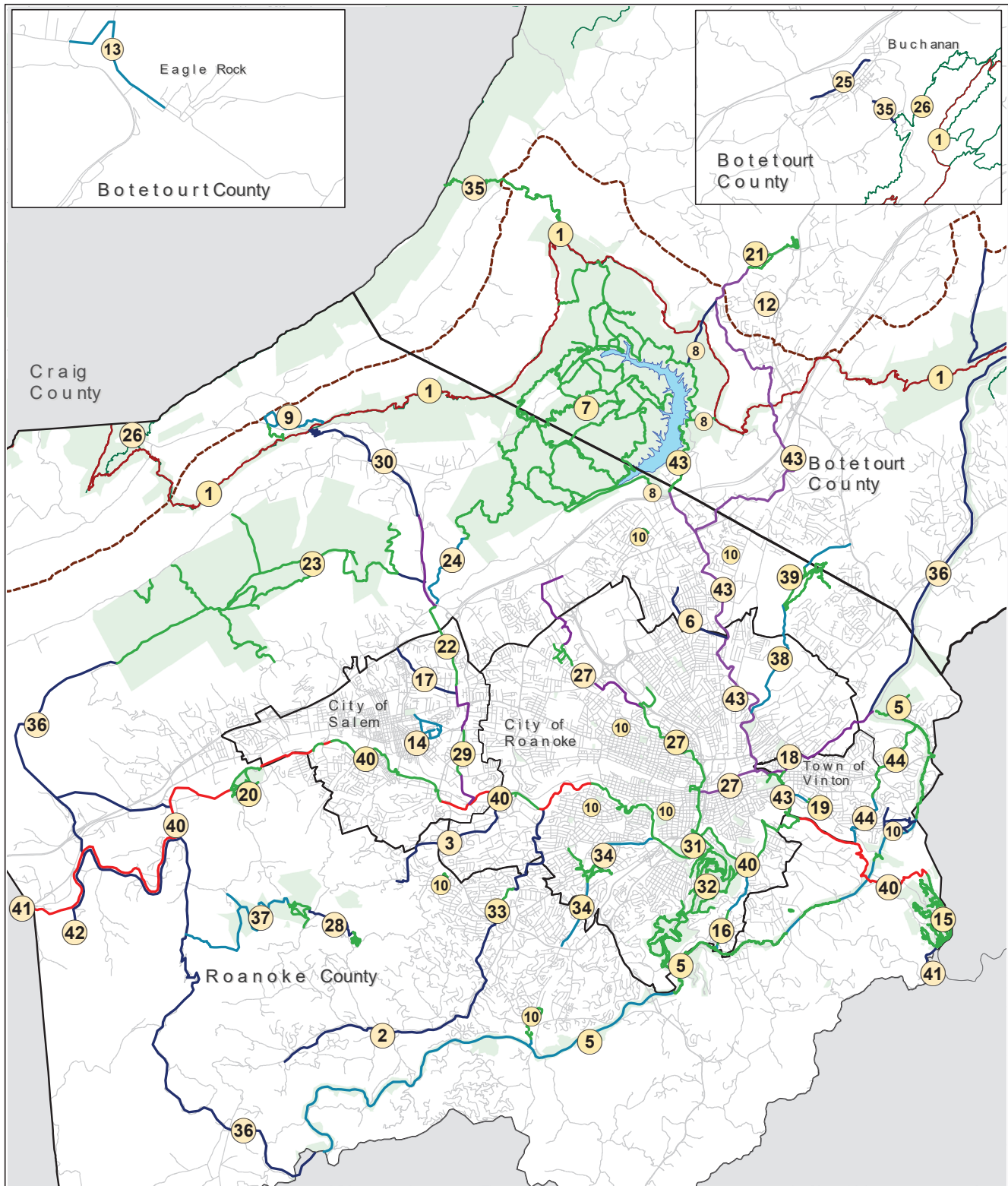
Develop multiple feasible alignments for the Roanoke River Greenway between Green Hill Park and Montgomery County which will lay the groundwork for future funding requests.

## Study Timeline:



### Study Partners:





2018 Greenway Plan Network Map

Prepared by the  
**REGIONAL** commission

- |  |   |  |
|--|---|--|
| 1 - Appalachian Trail                  | 17 - Gish Branch Greenway                   | 32 - Mill Mountain Park Trails         |
| 2 - Back Creek Greenway                | 18 - Glade Creek Greenway                   | 33 - Mudlick Creek Greenway            |
| 3 - Barnhardt Creek Greenway           | 19 - Gladetown Trail                        | 34 - Murray Run Greenway               |
| 4 - Birding and Wildlife Trail Sites   | 20 - Green Hill Park Trails                 | 35 - National Forest Connections       |
| 5 - Blue Ridge Parkway Trails          | 21 - Greenfield Trails                      | 36 - Perimeter Trail                   |
| 6 - Carvin Creek Greenway              | 22 - Hanging Rock Battlefield Trail         | 37 - Poor Mountain Trails              |
| 7 - Carvins Cove Trail Network         | 23 - Havens Wildlife Management Area Trails | 38 - Read Mountain Greenway            |
| 8 - Carvins Cove Connections           | 24 - Hinchee Trail                          | 39 - Read Mountain Trails              |
| 9 - Catawba Greenway                   | 25 - James River Greenway                   | 40 - Roanoke River Greenway            |
| 10 - City, County and Town Park Trails | 26 - Jefferson National Forest Trails       | 41 - Roanoke River Greenway Extensions |
| 11 - Craig Creek Trail                 | 27 - Lick Run Greenway                      | 42 - Spring Hollow Trails              |
| 12 - Daleville Greenway*               | 28 - Long Ridge Trail                       | 43 - Tinker Creek Greenway*            |
| 13 - Eagle Rock Greenway               | 29 - Mason Creek Greenway                   | 44 - Wolf Creek Greenway               |
| 14 - Elizabeth Greenway                | 30 - Masons Cove Greenway                   |  |
| 15 - Explore Park Trail Network        | 31 - Mill Mountain Greenway                 |  |
| 16 - Garden City Greenway              |   |  |

\*Please see Appendix E for more information about the alternative alignments for Tinker Creek and Daleville Greenways.

#### Legend

##### Proposed Greenways

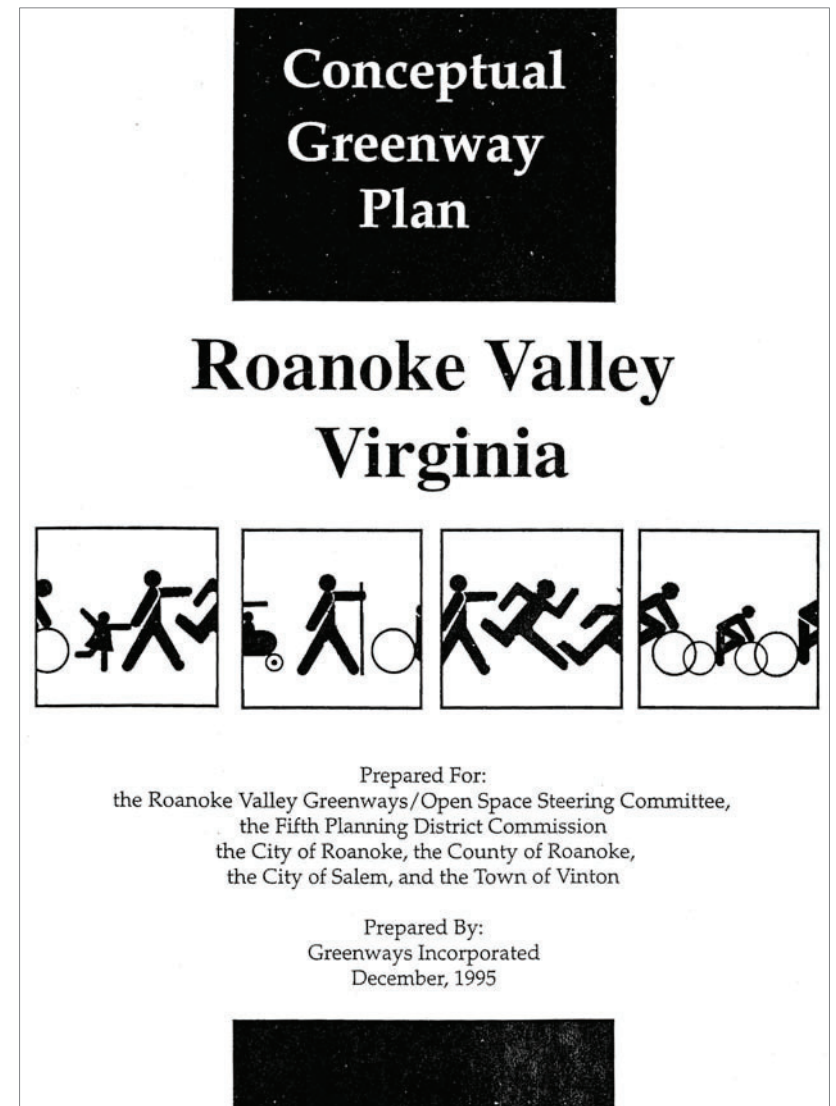
- Category 1 Roanoke River Greenway, Unbuilt
- Category 2 Hard Surface Greenways and Trails, Unbuilt
- Category 3 Greenways and Trails in Design
- Category 4 Conceptual Greenways and Trails
- Category 5 Built Greenways and Trails
- National Forest Trails
- Appalachian Trail
- U.S. Bicycle Route 76
- Locality Boundaries
- Public Lands





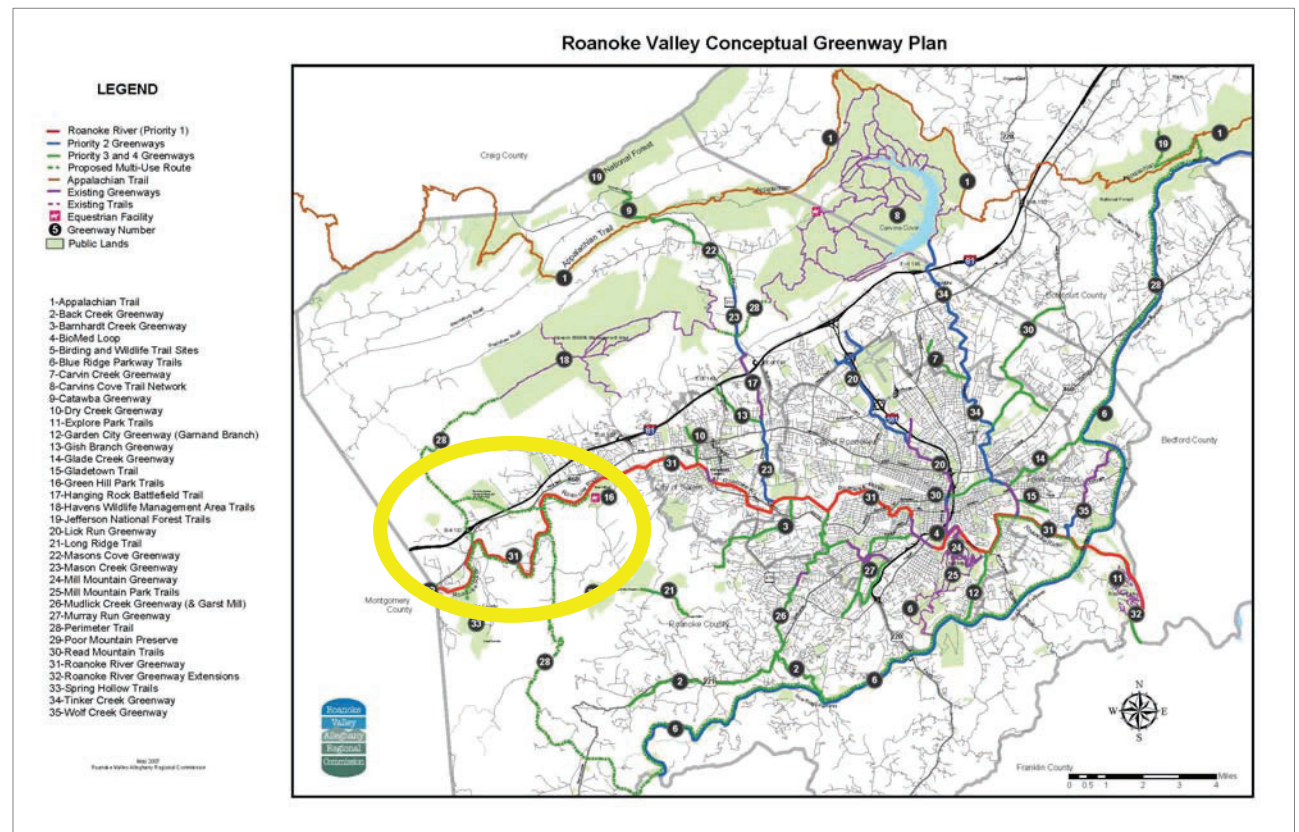
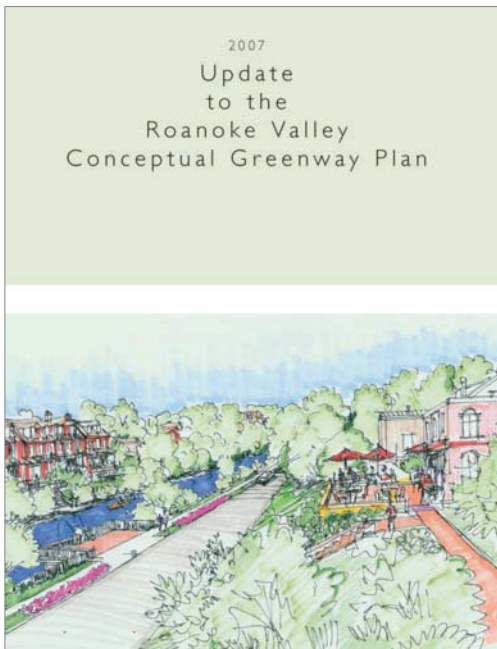
# West Roanoke River Greenway History

**1995:** *The Roanoke Valley Conceptual Greenway Plan* was completed which identifies the Roanoke River Greenway.



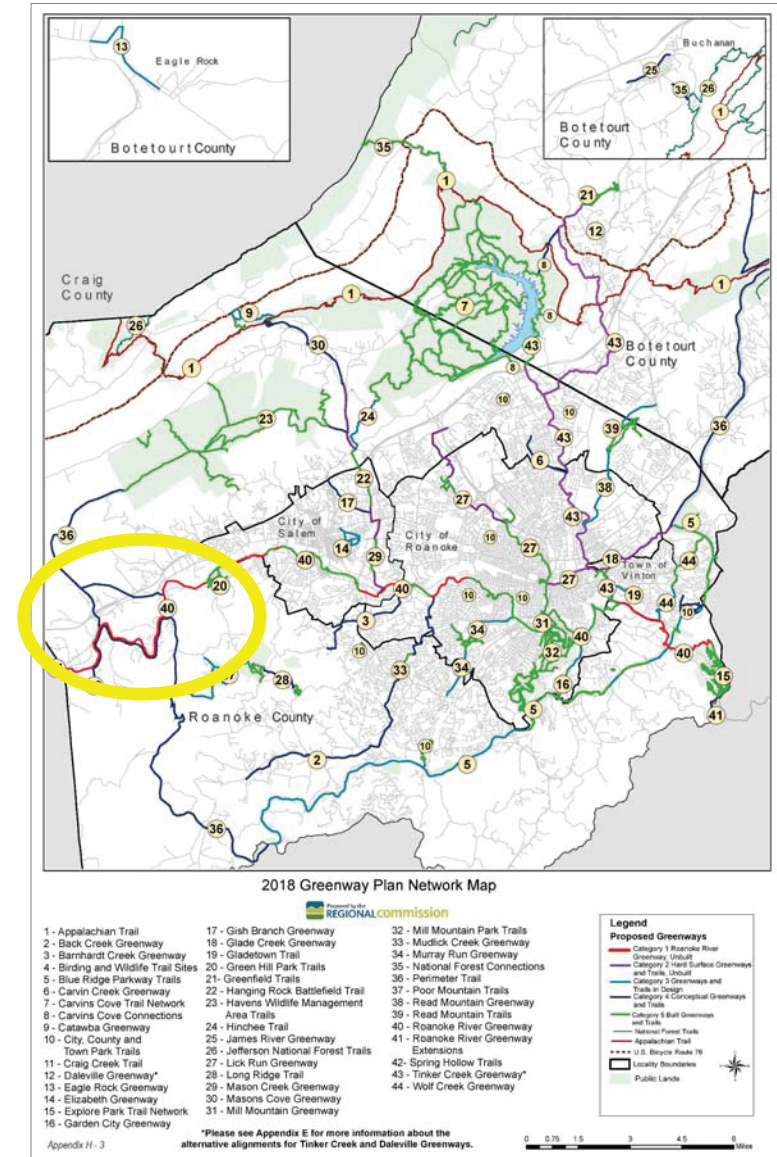
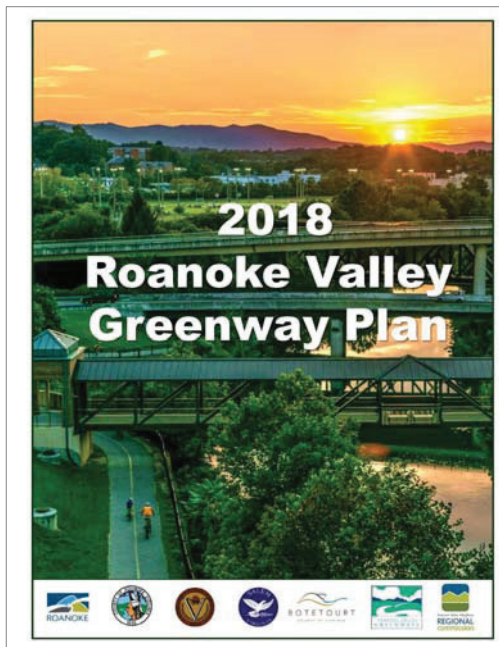
# West Roanoke River Greenway History

**2007:** Update to the Roanoke Valley Conceptual Greenway Plan was adopted by the Roanoke Valley Greenway Commission and member localities, including Roanoke County. The Roanoke River Greenway is the top priority.



# West Roanoke River Greenway History

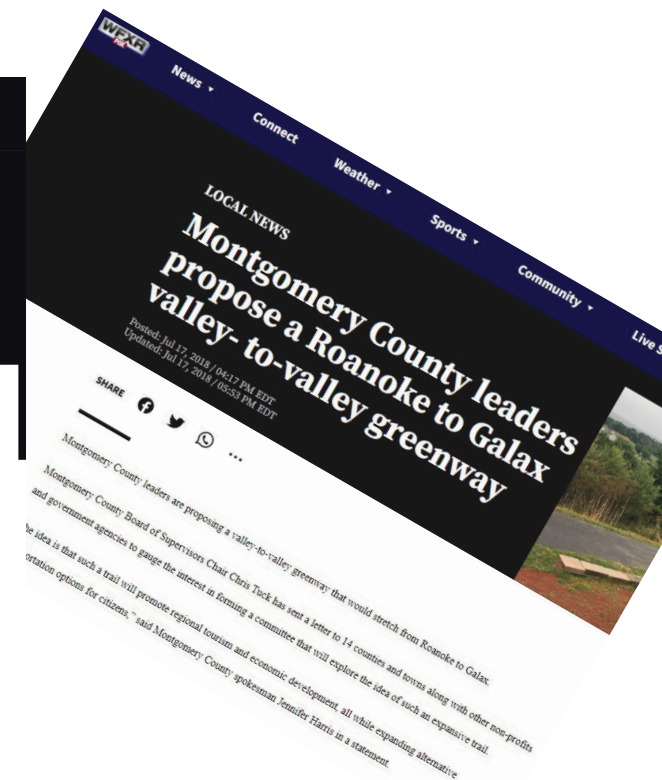
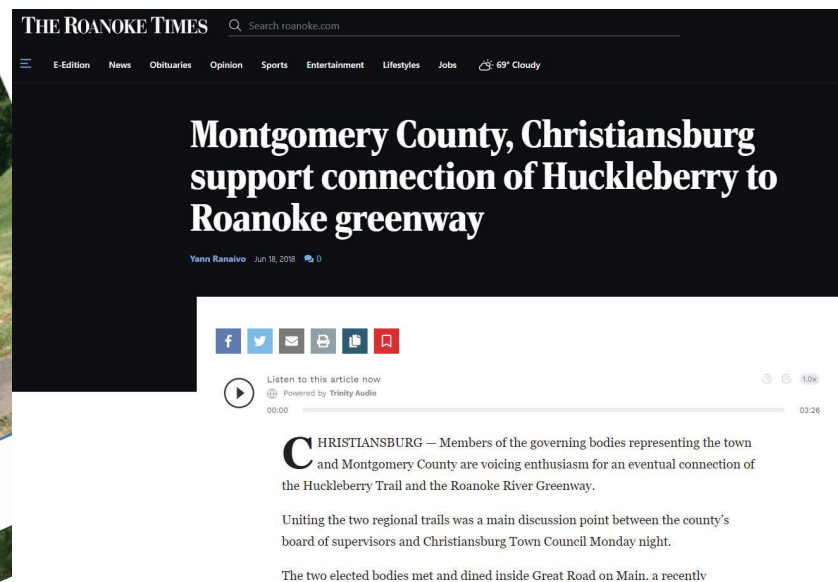
**2018:** *The Roanoke Valley Greenway Plan* was adopted by the Roanoke Valley Greenway Commission and member localities, including Roanoke County. The Roanoke River Greenway is identified in Category 1.





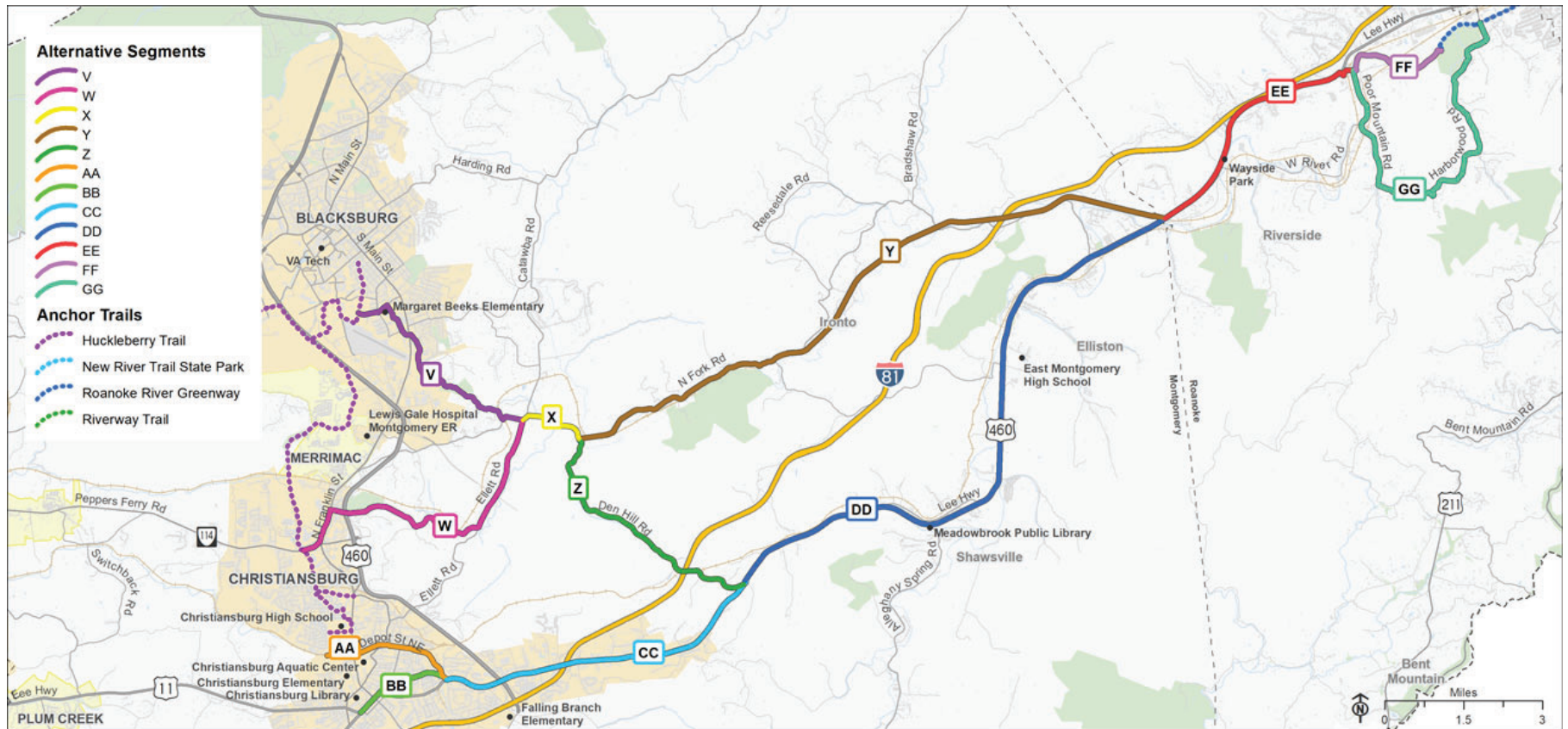
# West Roanoke River Greenway History

**2018:** Montgomery County and Town of Christiansburg officials revived discussion of the Valley to Valley Trail, a long-discussed long-term vision to connect the Huckleberry Trail in the New River Valley to the Roanoke River Greenway.



# West Roanoke River Greenway History

**2020:** VDOT initiated a high-level study of potential routes for the Valley to Valley Trail, which is ongoing.





# West Roanoke River Greenway Implementation

**2010-2021:** Roanoke County applied for and received funding for the Roanoke River Greenway between Kingsmill Drive and Green Hill Park.

**2022:** VDOT approved a phasing plan for the Roanoke River Greenway between Kingsmill Drive and Green Hill Park. Phase 1, between Kingsmill Drive and Riverside Nursery, is anticipated to be constructed in 2023. A trailhead parking lot is planned for construction just east of Riverside Nursery as part of Phase 1.





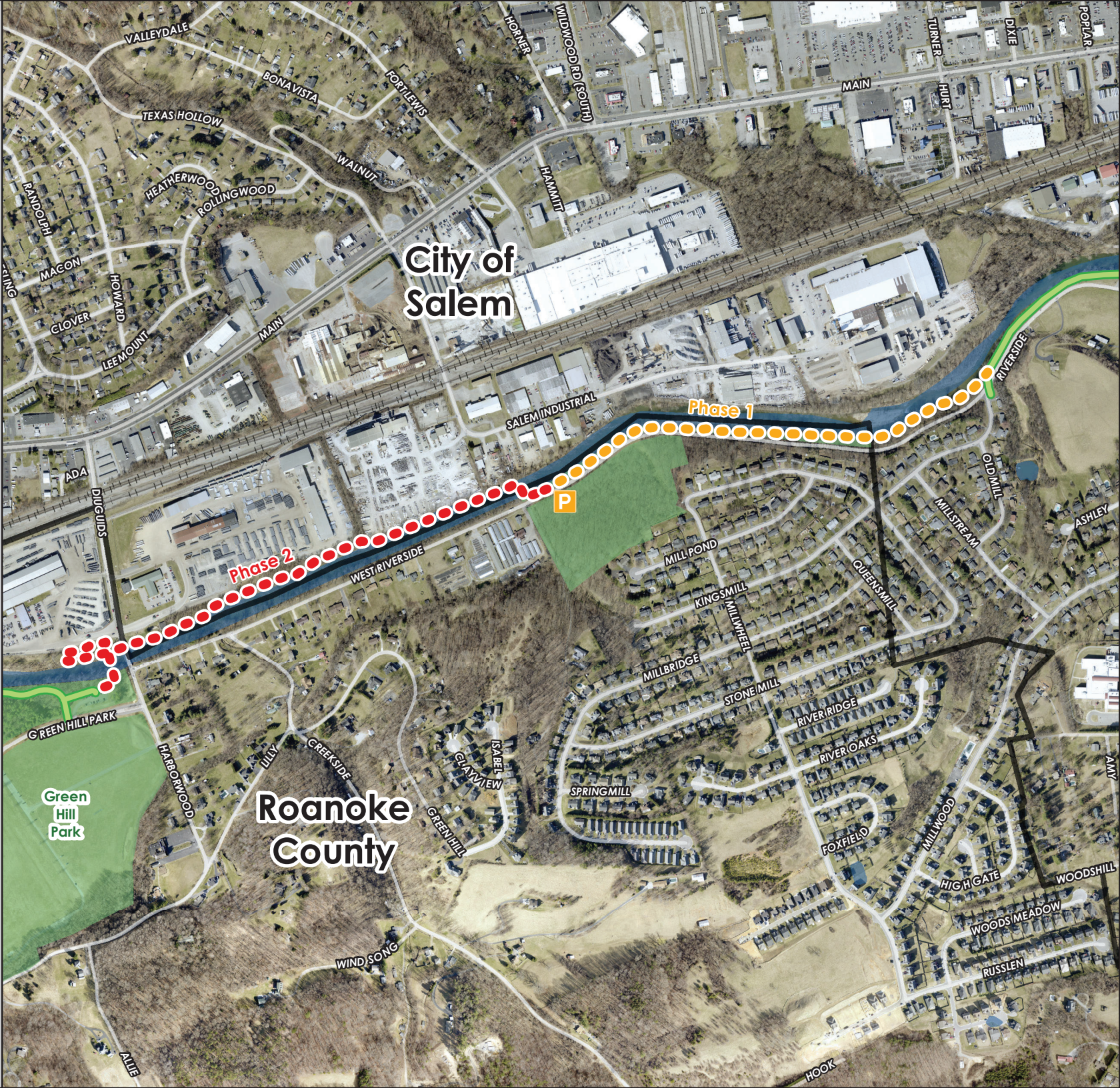
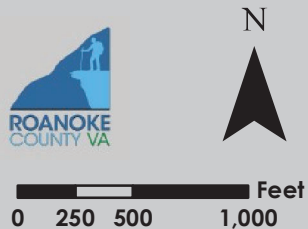
# West Roanoke River Greenway: Kingsmill Drive to Green Hill Park

- Legend**
- Parcels Owned by Roanoke County
  - Streets
  - Railroad Tracks
  - Waterbodies
  - Jurisdiction Boundary

## Roanoke River Greenway

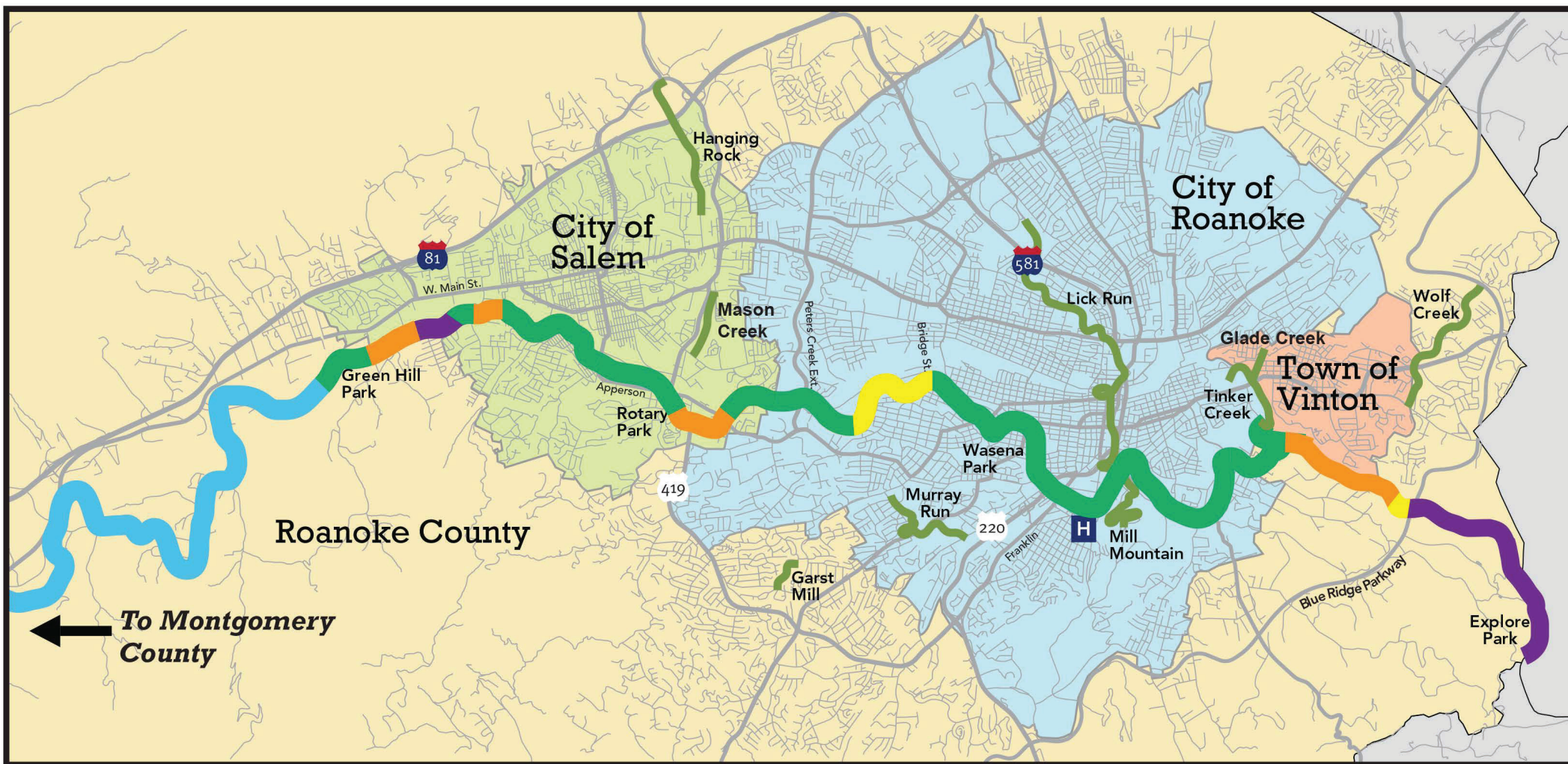
- West Roanoke River Greenway Phase 1: West Riverside Drive Trailhead to Kingsmill Drive, UPC 97171 (Construction in 2023)
- West Riverside Drive Trailhead to be Constructed as Part of Phase 1
- West Roanoke River Greenway Phase 2: West Riverside Drive Trailhead to Green Hill Park (Unfunded)
- Existing Section

October 2022





# Roanoke River Greenway Status Map





# Environmental Characteristics of West Roanoke River Greenway Feasibility Study Area

## Legend

- West Roanoke River Greenway Feasibility Study Area
- Streets
- Railroad Tracks
- Existing Sidewalk
- Existing Greenway/Trail
- State or Local Recreational Facilities
- Western Virginia Water Authority Property

## Environmental Characteristics

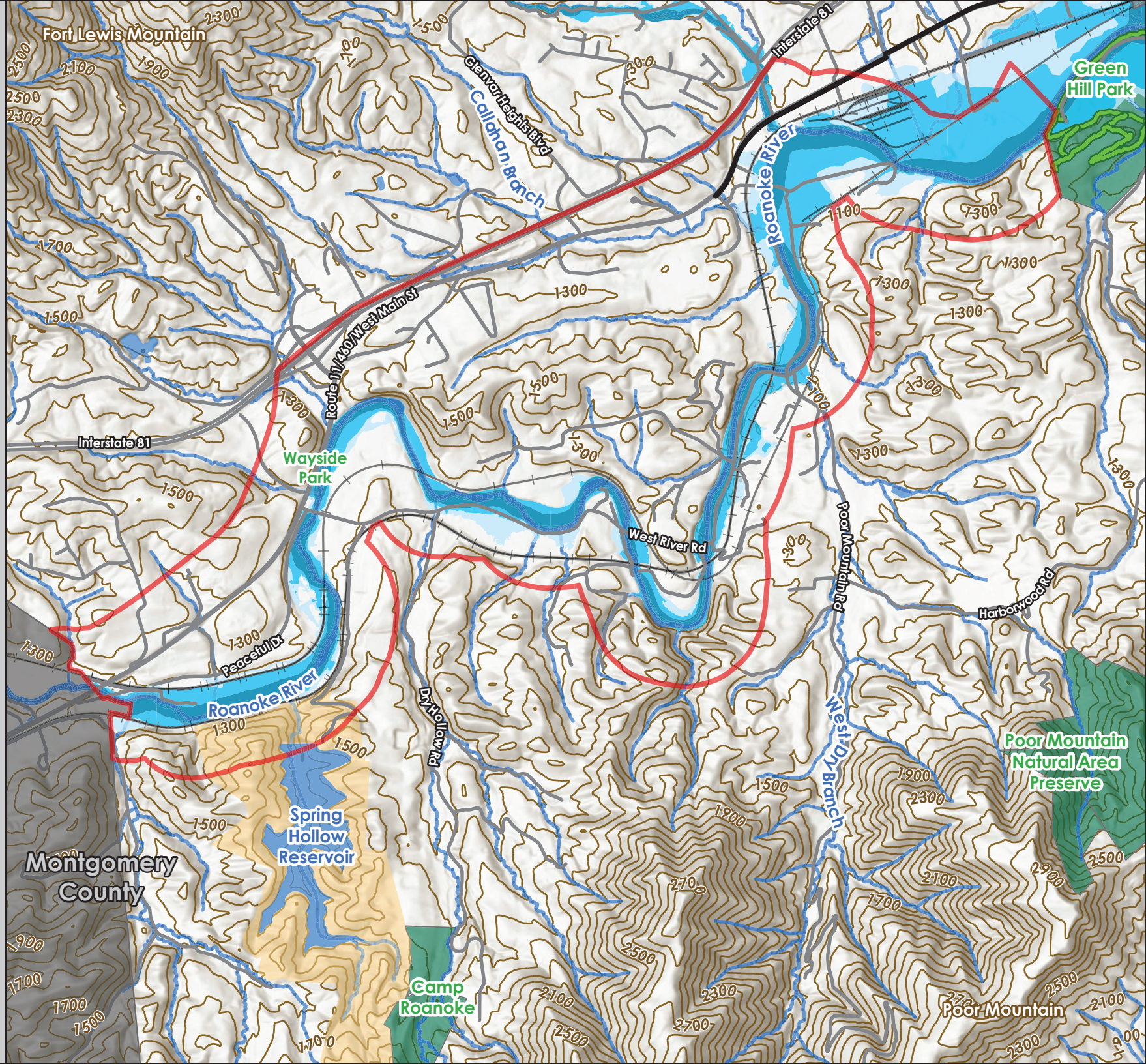
- Waterbodies
- Floodway
- 100-Year Floodplain
- 500-Year Floodplain
- 100ft Contours

October 2022



Miles

0 0.15 0.3 0.6





# What Amenities Would You Like to See on the Greenway?

*Place stickers next to amenities you would like to see on this greenway.*

BENCHES



PICNIC AREAS



MUTT MITT STATIONS



VIEWING/FISHING PLATFORMS



SWIMMING ACCESS



BOAT ACCESS



PLAYGROUNDS



OTHER (Write your ideas here)

# What would you like to see this greenway connect to?

*Place dot stickers on locations you  
would like this greenway to connect to.*

## Legend

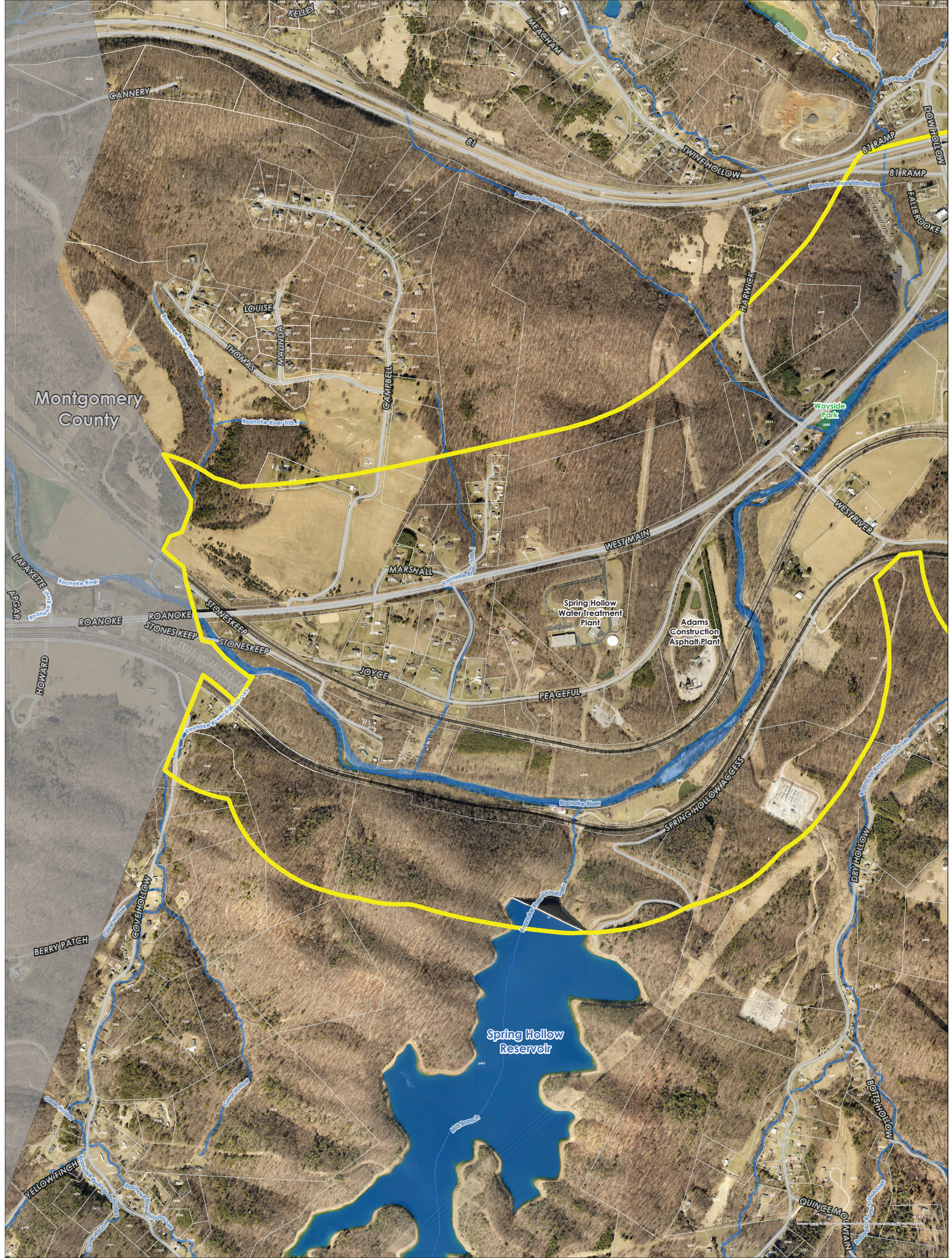
- West Roanoke River Greenway Feasibility Study Area Boundary
- Streets
- Railroad Tracks
- Existing Sidewalk
- Existing Greenway/Trail
- Local Recreational Facility
- Parcels
- Waterbodies

0 765 1,530 3,060 Feet



**[Title & Legend for map split over the following three (3) pages]**





Montgomery  
County

Spring Hollow  
Reservoir











**What do you love about  
Roanoke Valley Greenways?**



# Your Role at This Stage of the Study



- Let us know where you would like to see a greenway in your community.
- Let us know what you would like this greenway to connect to.
- Let us know what amenities you would like on and around this greenway.
- Share your level of enthusiasm about this project with us!
- Let us know if we are missing anything in our analysis.


# Draw Your Own Greenway

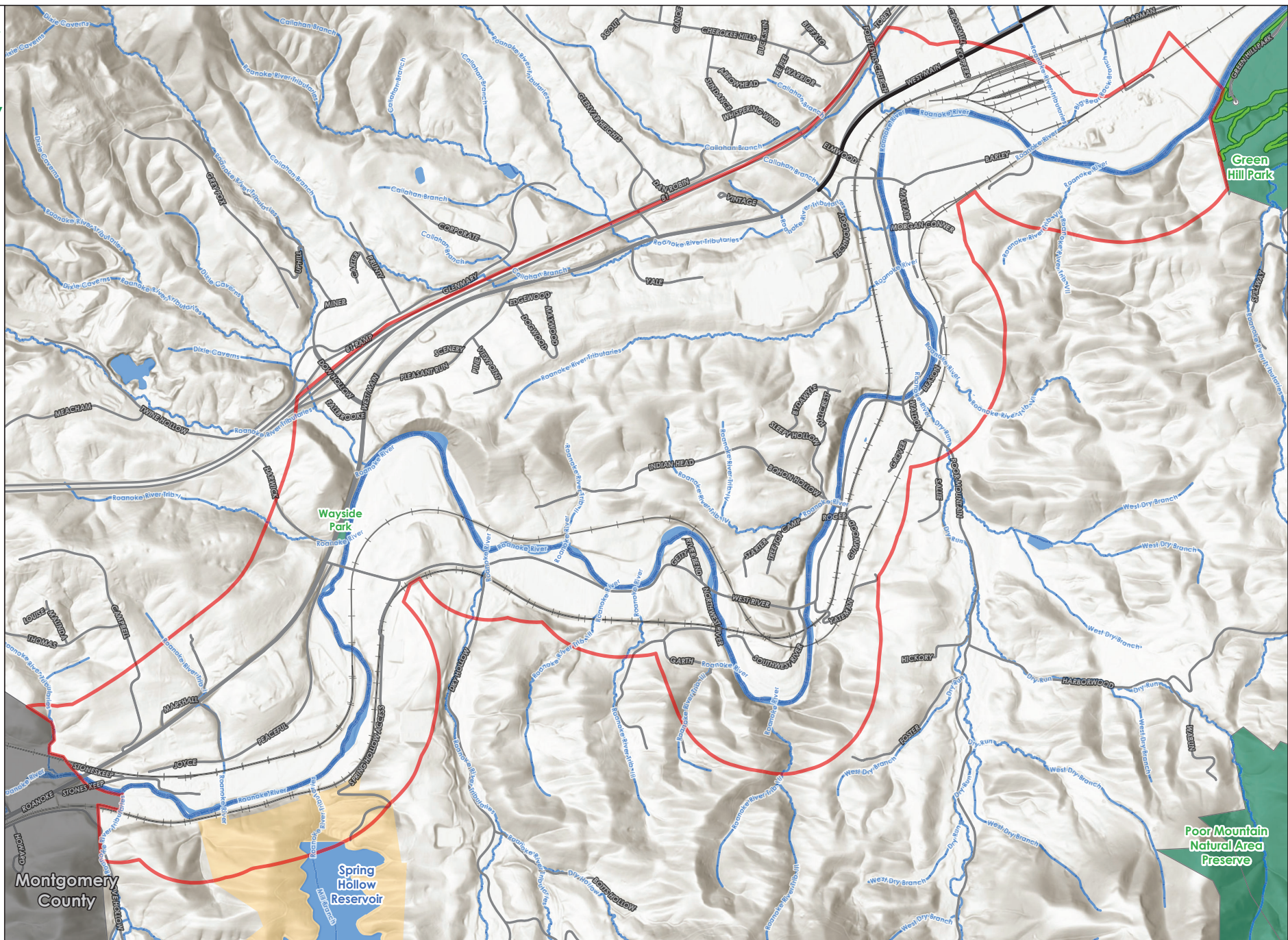
If you have an idea of the path you would like to see this greenway take, please draw a line on the map and return to a staff member.

- Legend**
- West Roanoke River Greenway Feasibility Study Area Boundary
  - Streets
  - Railroad Tracks
  - Existing Sidewalk
  - Existing Greenway/Trail
  - Waterbodies
  - State or Local Recreational Facilities
  - Western Virginia Water Authority Property

October 2022

 Miles  
0 0.1 0.2 0.4





10) Please share any other thoughts about this greenway project.

---

---

---

---

---

---

11) If you would like to receive updates about this greenway project, please provide your email address below.

---

Place  
Stamp  
Here

Roanoke County Department of Planning  
Attn: Isaac Henry  
5204 Bernard Drive  
P.O. Box 29800  
Roanoke, VA 24018



## West Roanoke River Greenway Feasibility Study Survey

Fall 2022

Thank you for taking the time to complete this survey. We appreciate your input. Please return this survey via mail or the drop box at the Glenvar Library by November 4th. You may also fill out the survey online at [www.RoanokeCountyVA.gov/WRRG](http://www.RoanokeCountyVA.gov/WRRG).

1) What is your name?

---

2) What is your address?

---

---

3) What is your relationship to the Glenvar community? (Circle all that apply)

Live in Glenvar

Own Property in Glenvar

Work in Glenvar

Use Recreational Facilities in Glenvar

None of the Above

4) Do you use Roanoke Valley Greenways for any of the following activities? (Circle all that apply)

Walk

Run

Bike

Relax/Picnic

Fish

Other (please specify)

---

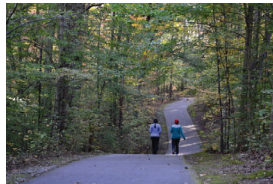
5) Please rank the following potential destinations of the greenway from most important to least important, using each number once (1 = most important, 6 = least important):

- \_\_\_\_\_ Parks, Playgrounds and Recreational Facilities
- \_\_\_\_\_ Historic Sites
- \_\_\_\_\_ Agritourism ("Pick Your Own" farms, farm tours, petting zoos, etc.)
- \_\_\_\_\_ Restaurants
- \_\_\_\_\_ Convenience Stores
- \_\_\_\_\_ Employers

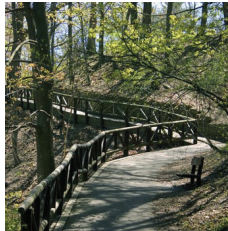
6) What kind of greenway would you like to see in your community? (Circle as many as you like)



On flat ground adjacent to river



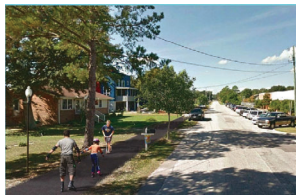
Through the woods



On hillside



Adjacent to highway



Adjacent to neighborhood street

7) How comfortable would you be with the location of a new trail where you live?

- ☐ I am interested in learning more about having the greenway on my property. **If so, answer question 8 and skip question 9.**
- ☐ I would like the greenway to be a few blocks or a football field distance away, but not closer. **If so, skip questions 8 and 9.**
- ☐ I would like to have a greenway within walking distance (1/4 mile), but not closer. **If so, skip questions 8 and 9.**
- ☐ I would like the greenway to be more than 1/4 mile away. **If so, skip question 8 and answer question 9.**

8) **If you are interested in learning more about having the greenway on your property, please let us know how we can contact you.**

Email \_\_\_\_\_

Phone \_\_\_\_\_

9) **If you would like the greenway to be farther than 1/4 mile away from your property, we respect your values and would like to hear about your concerns about having a greenway close to your home. Please share your point of view below.**

---



---



---



---



---



---