

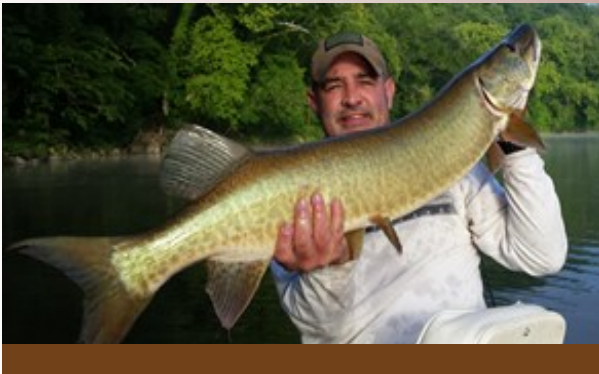
What's in it for YOU?

TIME and **MONEY**. By installing the right "dirt controls" at the right time - at the beginning of the project - and maintaining them throughout the project, you'll save money and suffer less aggravation. Here are some costs associated with poor maintenance of erosion controls and/or non-compliance:

- Project SHUT-DOWN due to a Stop Work Order
- Damage repair on adjacent properties and waterways
- Missed deadlines, litigation, and change orders from subs for additional work
- Possible civil penalties or administrative fines.

It's just **smarter** to do the job right in the first place. By fighting sediment pollution, you'll save money and time and protect Virginia's precious natural resources.

And . . . the next time you take your children or grandchildren to that favorite fishing hole, there just might be a few more fish to catch!



- Does my project disturb more than 2,500 square feet of land area?
- Do I need to be a Virginia - certified Responsible Land Disturber?
- Do I need an Erosion and Sediment Control Plan?
- Why does "Dirt Control" even matter?

See inside. . .

For more information, contact:

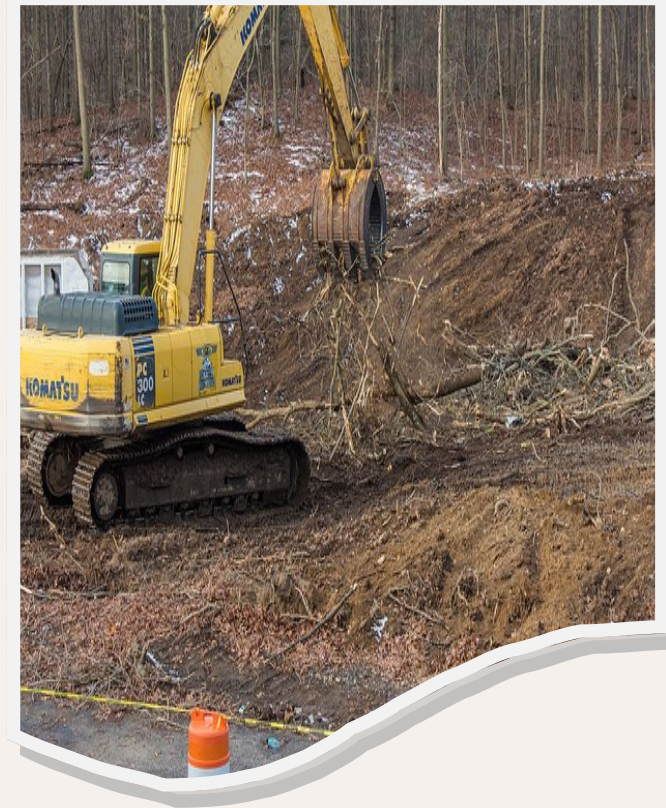
Community Development
(540) 772-2080 (Administration)
(540) 772-2065 (Permitting)

<http://www.roanokecountyva.gov>



COUNTY OF ROANOKE
5204 Bernard Drive, SW
P. O. Box 29800
Roanoke, VA 24018

It's just **DIRT** . . .



"What more do I need to know?"

You need to know . . .

When vegetation and topsoil are stripped from a construction site, erosion is sure to follow. Exposed soil, or dirt, erodes when there's nothing to protect it from rain and wind. This eroded dirt doesn't "just disappear." It usually ends up in a nearby waterway, where it eventually settles to the bottom to become sediment. In fact, this sediment just might find its way to your favorite fishing hole. If so, it won't help your odds of landing "the big one" there, because it smothers the fish eggs and blocks needed sunlight!



The rate of erosion on most construction sites is 500 times greater than what would occur naturally on an undisturbed, vegetated site. That's why urban land development is a major source of sediment pollution. In fact, by volume, sediment is currently the greatest pollutant of Virginia's rivers and streams.

Why is dirt important?

You might wonder why **plain, old dirt** is considered a contaminant. It pollutes by clouding waters, obstructing waterways, clogging storm drain pipes, damaging adjacent properties, and interfering with recreational use and navigation. It smothers fish and shellfish spawning grounds.

Ultimately, excessive sedimentation alters the diversity of fish populations in waterways and affects the organisms on which fish feed.

What should you do?

Keep your dirt on your project site! Be sure to properly install erosion and sediment controls and do so at the beginning of construction; maintain the controls throughout the project.

Also be sure to:

- Select & install controls that suit the site's topography, soils, drainage patterns, and natural vegetation.
- Clear the smallest area possible in which to complete your work, and keep as much of the existing vegetation as possible. Allow cleared areas to remain cleared for the least possible time.
- Install controls that protect your project's disturbed areas from offsite runoff and that prevent sedimentation downstream. Remember, the goal is to keep your dirt on your project!
- Slow down stormwater runoff before it leaves your site.
- **Immediately** stabilize disturbed areas after final grading.

You might also want to ask yourself, "If it rains tonight, will these controls do the job? Will they protect the site and nearby waterways and properties? If your answer is "NO," then you need to add more protection **BEFORE IT RAINS!**



Is there "dirt" training?

YES! The Commonwealth of Virginia, through the Department of Environmental Quality (DEQ), offers training and certification courses for those involved in the various aspects of erosion and sediment control (ESC) compliance and regulation.

All workers who "put the shovel in the dirt" need to be DEQ-certified as a Responsible Land Disturber.

Training and certification is available from DEQ for Responsible Land Disturbers, Plan Reviewers, Inspectors, and Program Administrators.

The courses are based on the Virginia Erosion and Sediment Control Law and Regulations and the *Virginia Erosion and Sediment Control Handbook*. For more information, please visit the DEQ website at: www.deq.virginia.gov.

What about "dirt" permits?

Any land disturbance of 2,500 square feet or more requires a **Land Disturbance Permit** from the County's Community Development Department.

To get the permit, an Erosion & Sediment Control Plan that meets the County's and DEQ's requirements must be submitted and approved by the County's Community Development Department.

To find out more about the land disturbance permit and related fees, please call the County's Community Development Department at (540) 772-2065.

ESC Plan requirements are posted online at: <http://www.roanokecountyva.gov/index.aspx?NID=317>